

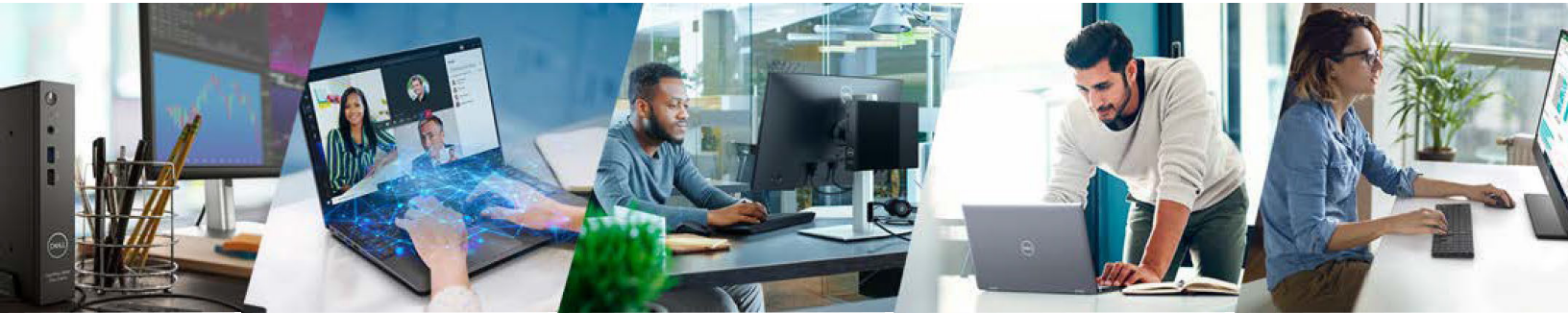


Cloud Client Workspace

Enhance your digital workspaces
with more security and agility

Enhance your digital workspaces with more security and agility

Meet the evolving needs of the workforce and increase efficiency without compromising on security with Cloud Client Workspace software and Dell thin client solutions.



Why choose Cloud Client Workspace

Create a personalized experience for virtual desktops (VDI) and Desktop-as-a-Service (DaaS) with Dell thin client solutions



Secure, optimized experience for VDI

Dell thin client solutions are optimized VDI endpoints purposefully designed to deliver a secure and seamless access to virtualized desktops and cloud applications with modern IT management.

Selection of thin client software to pair with desktops, all-in-ones and laptops from our commercial client portfolio to better meet the diversity of VDI use cases and workstyles.

Enjoy a rich user experience with the latest high-performance VDI protocols. Ready to connect to Citrix®, Microsoft®, VMware®, and Amazon WorkSpaces environments right out of the box, Cloud Client Workspace solutions are optimized to deliver a faster time-to-value, delivering instant-on user productivity.



Simplified, Modern IT

Experience effortless deployment and simplified management of a distributed workforce with the industry's only hybrid cloud management solution for thin clients¹.

Reduce the attack surface of your VDI environment with Dell ThinOS, the industry most secure thin client operating system². With a closed architecture, unpublished APIs, encrypted data and files exclusively packaged by Dell, ThinOS is secure by design.

Dell Technologies is your technology partner to work and innovate everywhere. We have the end-to-end expertise and can provide all the VDI components from the data center to the endpoint including a complete set of modern, high performance thin client solutions.



Advancing Sustainability

Dell Pro systems help empower your organization to make an impact on the future with innovative and sustainable products and solutions.

Our sustainable Dell Pro laptop portfolio works toward meeting our goals so you can meet yours. 100% recycled or renewable materials³ with multipack options to reduce packaging and transportation waste.⁴

Dell continues to lead the industry in the use of 50% recycled steel in the commercial desktops PC chassis.⁵ Dell Pro All-in-Ones are designed with up to 54% recycled plastic including post-consumer recycled plastic and closed loop plastic.⁵ Plus, there is 16% recycled glass in the panel.⁶

Complete the circular economy of your devices with Dell's Asset Recovery Services.⁶

[Learn more](#)

Dell thin clients reimagined

Re-engineered portfolio

Pair the thin client software you love and trust with our industry-leading Dell Pro systems for a modernized VDI user experience.

Most secure thin clients with Dell ThinOS¹

With a closed architecture, system hardening to limit attack surfaces, unpublished APIs, encrypted data and files exclusively packaged by Dell, ThinOS is secure by design.

Modern, unified management

With Wyse Management Suite Pro on public cloud – all the benefits of a Dell-managed console – available when you need it, and easy to scale.

Optimized VDI endpoints

Access digital and virtual workspaces with unprecedented simplicity and flexibility.

Secure by design

Work confidently from anywhere with solutions designed to augment the security of your VDI and DaaS environments.



Purpose-built ecosystems

for every workstyle, including #1 world-wide Dell Displays² and more flexible mounts and stands than ever.

End-to-end VDI technology partner

We have the end-to-end expertise and can provide all the VDI components from the data center to the endpoint including a complete set of modern, high performance thin client solutions.

Single call support

Gain efficiency with 24x7 single source of support for the full thin client solution.



Delight the end user

Enable seamless collaboration and productivity



Meet the needs of your VDI users

with a selection of thin client software and devices tailored to how people work.



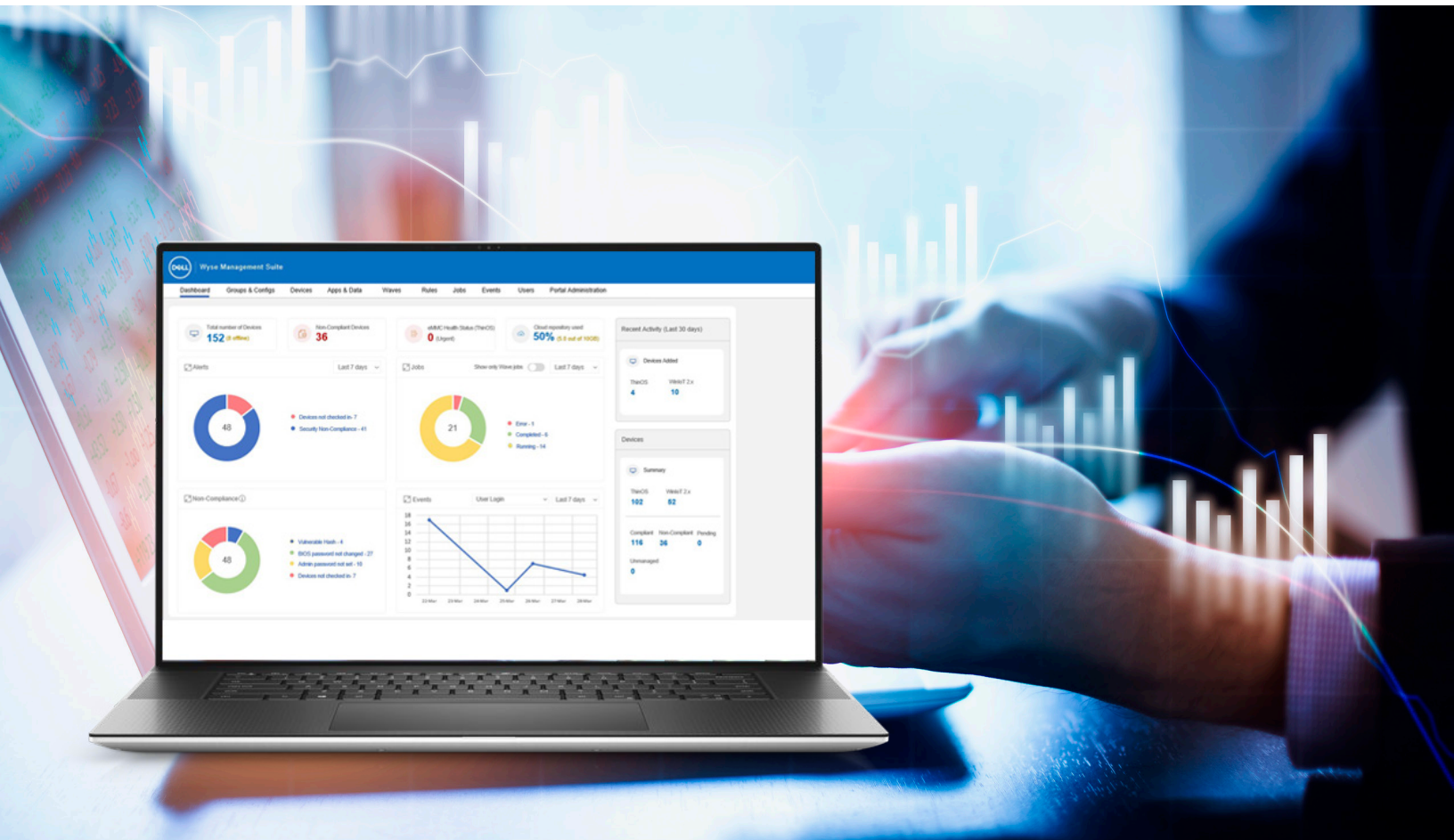
Ensure collaboration no matter where work happens

with thin client solutions validated with peripherals designed to provide rich collaboration and connectivity options.



Increase efficiency and productivity

with thin client solutions optimized for VDI, ready to deploy and centrally managed.



Simplify IT

Clear the way and modernize for superior and secure user experiences



Security

with Cloud Client Workspace software and thin client solutions optimized for VDI.



Deployment and management from anywhere

with Wyse Management Suite Pro.

Your thin client solution in 3 easy steps

Meet the evolving needs of the workforce and increase efficiency without compromising on security with Cloud Client Workspace software and Dell thin client solutions. Pair our thin client software options with industry-leading Dell Pro systems for a personalized VDI endpoint solution delivering smarter user experiences and stronger security.

1 Select the Thin Client Software

Dell ThinOS¹

The most secure thin client OS* is purpose-built for VDI to deliver a simplified end-user and IT experience. [Learn More >](#)

Windows IoT Enterprise¹

Power and familiarity of Windows® in a thin client optimized by Dell with robust security features and flexible management options. [Learn More >](#)

2 Choose a Form Factor

Laptop, All-in-One and desktop form factor options give you the freedom to create a personalized virtual workspace. Work in confidence anywhere and enable a more productive and collaborative VDI experience with our new premium devices².



OptiPlex 3000 Thin Client

The OptiPlex 3000 Thin Client delivers a quiet, durable computing experience and makes it easier to multi-task.



Dell Pro 24 All-in-One 35W (QC24251)

Sleek, space-saving All-in-One thin client solution that combines performance with collaboration features.



Dell Pro 14 Laptop (PC14250)

Work confidently with this reliable laptop equipped with essential performance features.



Dell Pro 16 Plus³ Laptop (PB16250)

Boost productivity with a large 16" display and a numeric keypad for data entry accuracy.

3 Add Wyse Management Suite Pro

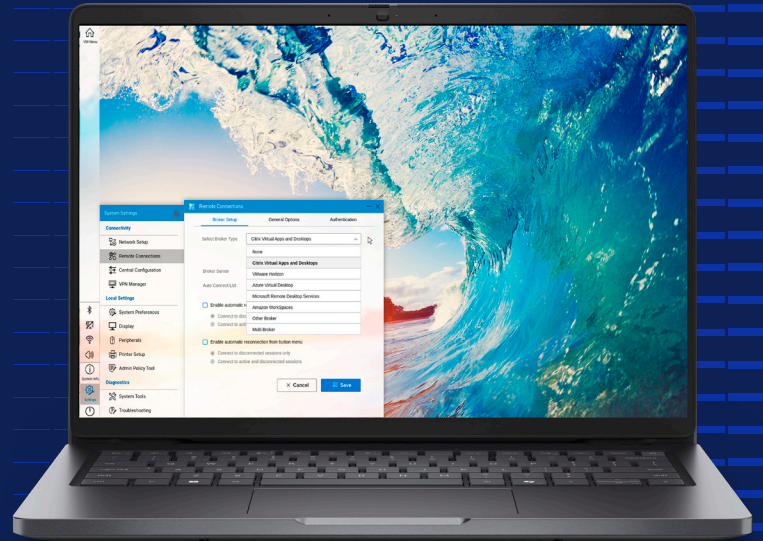
An enterprise-class solution that provides modern and secure management of all your Dell thin client solutions from anywhere. Securely manage a distributed workforce with a hybrid cloud solution designed to meet all deployment levels. [Learn More >](#)

[Click here to learn more about Cloud Client Workspace](#)

Based on Dell analysis of Dell ThinOS in Appliance Mode vs. competitive products, January 2025. CLM-006980
 1 Offering may vary by country and by configuration and operating system. Some items may be available after product introduction. For complete details, refer to the Setup and Specifications published on www.dell.com/support.
 2 Product images are not to scale. Refer to specifications for accurate measurements.

Dell ThinOS

The most secure thin client solutions
with Dell ThinOS¹



Secure by Design

No sensitive data or personal information exposed on the local device. With a closed architecture and centralized control, Dell ThinOS is designed to minimize risk and protect virtual desktops and Desktop-as-a-Service sessions. The new managed browser options* feature security lockdowns to enable safe SaaS, DaaS and Web app access. FIPS 140-2 and IPv6 capability ensure robust VDI session security.

Ready for hybrid work

Enjoy built-in support for popular virtual workspaces and easy collaboration, with an optimized architecture supporting leading unified communications solutions.

[Learn More >](#)

Modern hybrid cloud management

Effortless deployment and dynamic device configuration and monitoring for modern anytime/anywhere management from the cloud.

From zero to productivity, instantly

Wyse Management Suite Pro on public cloud centrally configures, monitors, and manages Dell endpoints and scales from one to hundreds of thousands of devices to meet all levels of deployment.

Simplified User Experience

The modern desktop in Dell ThinOS offers a quick start for productivity, an intuitive task-bar for session controls and new browser options* for DaaS/SaaS access. Complete your setup with tested and validated peripherals designed to work seamlessly together and enhance productivity.

* Requires Dell ThinOS version 10.

Select your thin client solution with Dell ThinOS

OptiPlex 3000 Thin Client

Dell Pro 24 All-in-One 35W (QC24251)

Dell Pro 14 Laptop (PC14250)

Dell Pro 16 Plus Laptop² (PB16250) (Customer install option)



Dell Hybrid Client

Modern thin client software with incredible flexibility



Simplified workflow

Access seamlessly an array of VDI solutions, IT-approved web apps and storage locations. And with the global file search, everything is easily found, and the workflow never interrupted. resistant.

Multiple ways to deliver apps and multiple form factors

Dell Hybrid Client supports multiple operating modes: Cloud, VDI or local or a combination of all. Compatible with laptops, All-in-Ones, desktops and workstations so no matter how you work, it works for you.

[Learn More >](#)

Instant, seamless access to digital and virtual workspaces

With the convenient and secure single-sign-on³, your workforce gets immediate access to necessary apps and data, whether they're hosted locally, in the public or private cloud monitoring for modern anytime/anywhere management from the cloud.

A consistent experience

By enabling the follow-me feature, end users get a consistent, personalized experience no matter which fixed or mobile device they log in from.

Safe at every touch point

Experience enhanced browser security through upgraded system lockdown with more granularity in security profiles centrally managed.

Modern hybrid cloud management

Solution for greater control and agility.

Select your modern thin client solution with Dell Hybrid Client

OptiPlex 3000 Thin Client

OptiPlex All-in-One

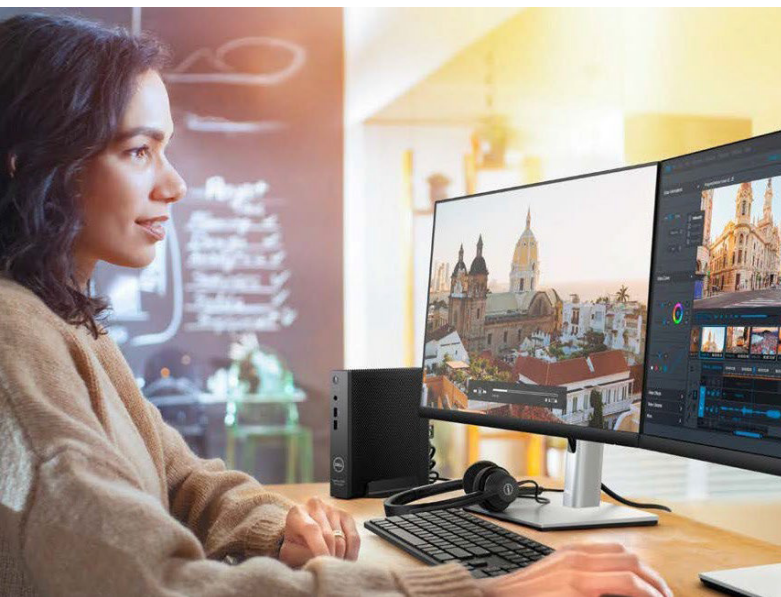
OptiPlex Micro

Latitude 3450

Latitude 5450

Plus, a broader selection of OptiPlex, Latitude and Precision systems*

[Learn More >](#)



Windows 11 IoT Enterprise

Power and familiarity of Windows® in a thin client solution optimized by Dell.



Tailored to your needs

The versatility and flexibility to access all types of virtual workspaces, including cloud-hosted desktops and Desktop-as-a-Service solutions such as Microsoft Azure Virtual Desktop, Citrix DaaS or Omnisia Horizon Cloud. Boost productivity and collaboration with a secured, personalized Windows® experience.

Flexible management options

Choose from Dell's exclusive Wyse Management Suite, support from Omnisia Workspace ONE®1 for a unified digital workspace platform and Microsoft Endpoint Configuration Manager¹ to take advantage of existing investment.

[Learn More >](#)

Best-in-class security

Experience enhanced protection against modern security threats, less disruption in your workday and less time managing remediation of devices with Dell added-value software securing the desktop experience.

Ready for VDI

Built-in suite of comprehensive and enhanced clients for popular VDI environments.

Rich collaboration experience

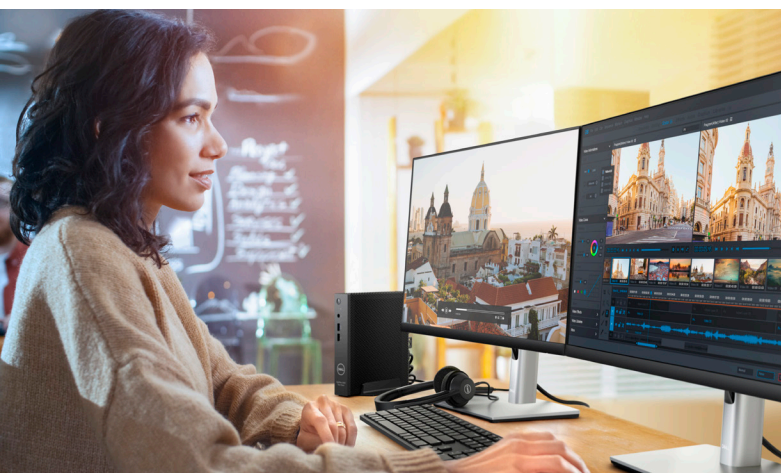
Support for local VDI plugins enables high-quality media streams and delivers immediate benefits to the business with real-time communication and improved collaboration.

Intuitive IT interface

Deploy systems, manage embedded applications and control the write filter through an intuitive interface with Dell Application Control Center.

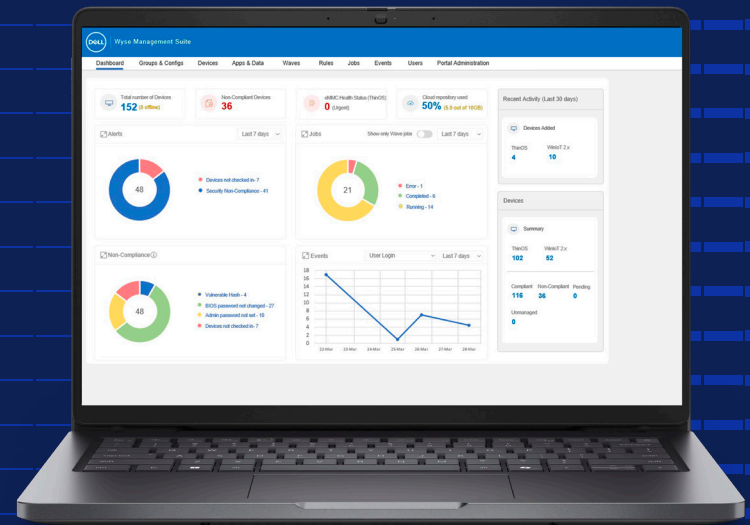
Select your thin client solution with Windows 11 IoT Enterprise

OptiPlex 3000 Thin Client
Dell Pro 24 All-in-One 35W (QC24251)
Dell Pro 14 Laptop (PC14250)



Wyse Management Suite

Hybrid cloud management solution for Dell cloud clients.



Modern management

Enjoy the flexibility of a modular architecture with the option of either on-premises deployment or Dell managed public cloud – or a combination of both. Maximize productivity with automated processes, intelligent insights and rules-based automation.

Keep everything running

Future proof your business with support for high availability. Work confidently with Azure Active Directory authentication for role-based administration, advanced security through two-factor authentication, HTTPS-based imaging and compliance policy alerts.

[Learn More >](#)

From zero to productivity instantly

Gain instant control with Wyse Management Suite Pro on public cloud¹. Easily get started and scale up as your fleet grows. Effortlessly oversee all your endpoints, whether on-site or behind firewalls, with Wyse Management Suite Pro as-a-Service. Simplify day-to-day operations with a dynamic dashboard providing actionable insights, and maintain granular control over your fleet from a single pane of glass.

Stay ahead of issues

Wyse Management Suite Pro comes with Dell ProSupport² for Software - ProSupport for Software offers 24x7 access to in-region advanced technology experts who take action to resolve critical issues when they arise, so you can focus on the strategic work that moves your business ahead.



OptiPlex 3000 Thin Client

Sleek and mighty desktop thin client
optimized for Dell cloud client solutions



Most secure¹ and versatile thin client

Designed by OptiPlex, with 30 years of reliable desktop innovation, including a rich ecosystem and sustainable components.

Ready for hybrid work

Enjoy built-in support for popular virtual workspaces and easy collaboration, with an optimized architecture supporting leading unified communications solutions.

Instant, seamless access to digital and virtual workspaces

Intel® Celeron and Pentium Quad Core processors.

Compact, fan-less design

Ideal for tight spaces and delivers a quiet, durable computing experience (no moving parts).

Modern hybrid cloud management

Solution for greater control and agility.

Designed and tested for OptiPlex 3000 Thin Client

Dell 24 Monitor – P2422H

Dell Pro Wireless Keyboard and Mouse – KM5221W

Dell Pro Stereo Headset – WH3022

OptiPlex Micro and Thin Client All-in-One Stand – MFS22

OptiPlex Micro and Thin Client Dual VESA Mount with Adapter Bracket

Dell Single Monitor Arm – MSA20



Dell Pro 24 All-in-One 35W thin client solution (QC24251)

Sleek, space-saving All-in-One thin client solution that combines performance with collaboration features.



Secure access to digital and virtual workspace

Versatile thin client operating system options and centralized control from Wyse Management Suite. Configure your Dell Pro All-in-One with Dell ThinOS or Windows 11 IoT Enterprise to power your VDI environment with a smarter user experience, stronger security and easier IT management.

Next-level video conferencing

Collaborate seamlessly with a built-in FHD HDR pop-up camera, and experience true color even in harsh lighting with Digital Overlap HDR. When you're ready for privacy, simply push the pop-up camera down to hide it.

Responsive, business - class performance

Engineered to increase your productivity with Intel® Core™ up to i5 processors when configured with Dell ThinOS or Windows 11 IoT Enterprise

Designed and tested for seamless collaboration innovation

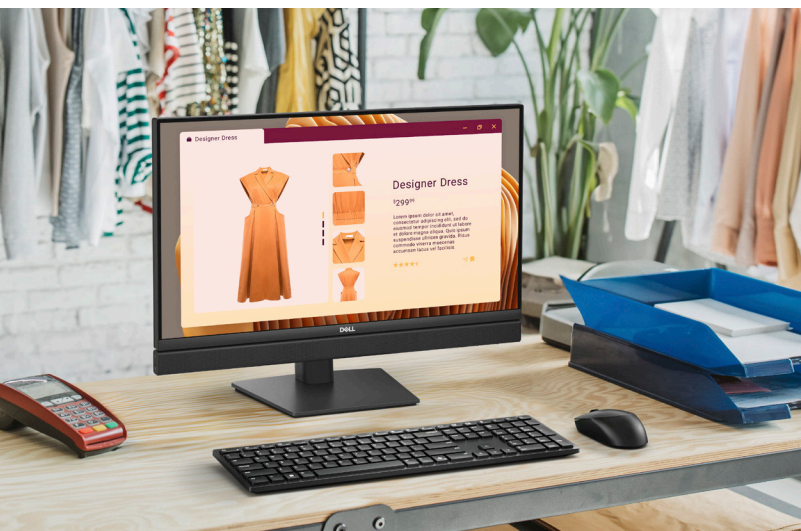
Match All-in-One with select Dell monitors, from the world's #1 monitor company¹, for vivid dual display productivity. Both feature virtually borderless, TUV-certified displays and slim, ergonomic stand.

Built to perform

Dell Pro desktops are built for reliability and durability, with less than 1% requiring service in their first year².

Designed and tested for Dell Pro 24 All-in-One

- Dell 24 Monitor -P2423D
- Dell Pro Wireless Keyboard and Mouse – KM5221W
- Dell Premier Multi-Device Wireless Keyboard and Mouse -KM7321W
- Dell Pro 24 All-in-One Basic Stand
- Dell Pro 24 All-in-One Height Adjustable Stand



Dell Pro 14 thin client solution (PC14250)

Modern design with up-levelled essential productivity features for every business.



Secure access to digital and virtual workspaces

Versatile thin client operating system options and centralized control from Wyse Management Suite. Configure your Dell Pro 14 laptop with Dell ThinOS or Windows 11 IoT Enterprise to power your VDI environment with a smarter user experience, stronger security and easier IT management

Collaborate more confidently

Look your best on every video call with an FHD IR camera with HDR technology that accurately captures image detail in challenging lighting conditions. Conferencing sounds amazing with two mics and dual speakers, featuring two bottom-firing speakers.

Scalable business-class performance

Experience the latest innovations with Intel® Core™ processors. An expansive 16:10 display with sleek, narrow bezels¹ and 5% greater screen area in the same footprint² providing more room for productivity and beautifully detailed resolution

Fast connectivity

Choose from an array of connectivity options including Wi-Fi 6, Wi-Fi 6E and a Wi-Fi 7 capable wireless card³

Exceptional battery life

Larger battery options and optional super low power displays keep your system running longer, with up to 10.3 hours of battery life in a single charge⁴.

Premium materials & finish

Meticulously crafted with laser textured finish in magnetite. Built to travel wherever your work takes you, our laptops undergo rigorous MIL-STD 810H testing for durability and reliability

Designed and tested for Dell Pro 14

Dell Pro 24 Plus USB-C Hub Monitor - P2425HE
Dell Pro Wireless Keyboard and Mouse - KM5221W
Dell Pro 7-in-1 USB-C Travel Hub - DA310
Dell Pro Wireless Headset - WL3024
Dell Pro 14-16 Plus EcoLoop Slim Backpack - CP5724S
Dell Pro Smart Dock - SD25 (only select capabilities are supported when the Dell Pro 14 is configured with Dell ThinOS operating system)



Dell Pro 16 Plus³

thin client solution

(PB16250)

Boost productivity with a large 16" display and a numeric keypad for data entry accuracy



Secure access to digital and virtual workspaces

Versatile thin client operating system options and centralized control from Wyse Management Suite. Configure your Dell Pro 16 Plus laptop with Dell ThinOS to power your VDI environment with a smarter user experience, stronger security and easier IT management.

Clear conferencing

Unleash your best self, even in challenging lighting conditions, with a FHD camera featuring HDR technology. Choose from a range of display options including QHD+, ComfortView Plus, Touch and more.

Bold design

Crafted with an aluminum top cover and palmrest, this mobile and space-saving design is both durable and sleek.

See it all

Enjoy more room for productivity with sleek, narrow borders on a spacious 16:10 aspect ratio display with 5% more screen space than a 16:9 aspect ratio.

Nimble navigation

Thoughtfully crafted for professional workforces with a full-size numeric keypad, roomy touchpad and palm rest for ample space to quickly navigate through tasks

Long-lasting battery life

Easily work from anywhere without being tethered to an outlet.

Work confidently

Optional fingerprint readers¹, smartcard readers¹ and FIPS 140-2 capability ensure robust VDI session security.

Designed and tested for Dell Pro 16 Plus

Dell Pro 27 Plus Video Conferencing Monitor - P2724DEB
 Dell Pro 7-in-1 USB-C Travel Hub - DA310
 Dell Pro Plus Keyboard and Mouse - KM7321W
 Dell Pro Plus Wireless ANC Headset - WL5024
 Dell Pro 14-16 Plus EcoLoop Slim Backpack - CP5724S
 Dell Pro Thunderbolt 4 Smart Dock - SD25TB4*

* Dell ThinOS supports the basic functionalities of the Smart Dock SD25TB4. However, some advanced capabilities are not supported



Cloud Client Workspace solutions address the needs of regulated industries to ensure higher security and more manageability.



Healthcare

Healthcare professionals need to securely access both their applications and patient records, regardless of location or available station. Dell Cloud Client Workspace solutions allow you to focus on your patients rather than endpoints – with improved security, simpler administration and better performance.



Retail

Retail IT needs to be mindful of expansion plans, data security, management and the durability of systems, making cloud client computing a natural choice for the sector. Dell Cloud Client Workspace solutions are secure and easy to manage and ultimately improve the instore and online retail customer experience.



Government services

Government IT systems come with their own unique set of challenges, but at the forefront are security and strict compliancy requirements. Dell Cloud Client Workspace solutions provide government, local, regional and federal agencies a secure platform, which enables IT to meet strict government mandates to access highly sensitive information. Employees can access their cloud environment securely, while data is protected from the datacenter to the edge.



Financial services

The technical needs of financial services are demanding – they need to fit the business and comply with policies. Data accuracy, integrity and access speed are integral and systems failures or delays could be damaging. Dell Cloud Client Workspace solutions help to make your infrastructure more reliable and manageable to keep your company's data at minimal risk.



Education

Within the education sector, instructors need to instruct and students need to learn—just as business professionals need to do business. Dell Cloud Client Workspace solutions can empower your school, college or university – through improved security, simpler administration and better performance for IT professionals, educators and students.

Disclaimers continued**Page No 2**

1. Requires Wyse Management Suite Pro edition. Based on Dell Internal Competitive Analysis, January 2025.
2. Based on Dell analysis of Dell ThinOS in Appliance Mode vs. competitive products, January 2025.
3. content in the form of sustainably forested materials. Excludes optional items added to order and included in box.
4. Based on internal analysis, November 2024.
5. Based on internal analysis, January 2025. Percentage is based on system plastic weight. Post-consumer recycled plastic: up to 43%, Closed-Loop ITE derived plastic: up to 11%.
6. Based on internal analysis, January 2025. Percentage is based on system plastic weight. Post-consumer recycled plastic: up to 41%, Closed-Loop ITE derived plastic: up to 11%. Recycled glass is in the panel.

Page No 3

1. Based on Dell analysis of Dell ThinOS in Appliance Mode vs. competitive products, January 2025.
2. Dell is the world's #1 monitor company. Source: IDC Worldwide Quarterly PC Monitor Tracker, Q4 2024.

Page No 7

1. Based on Dell analysis of Dell ThinOS in Appliance Mode vs. competitive products, January 2025.
2. ThinOS is a customer install option available for select configuration options and capabilities of the Dell Pro 16 Plus. ThinOS v10 can be manually installed from a USB key or deployed to units shipped with factory-installed Ubuntu 24.04 for Managed Clients. The required ThinOS v10 subscription license is sold separately.

Page No 9

1. Not included, available from respective vendors.

Page No 10

1. Requires Wyse Management Suite Pro on public cloud and license activation.
2. Dell ProSupport availability and terms vary by region. [See dell.com/servicecontracts/global](https://www.dell.com/servicecontracts/global).

Page No 11

1. Based on Dell analysis of Dell ThinOS in Appliance Mode vs. competitive products, January 2025.

Page No 12

1. Dell is the world's #1 monitor company. Source: IDC Worldwide Quarterly PC Monitor Tracker, Q4 2024.
2. Based on Dell Quality Intelligence (Qi) tool - Dell Internal Analysis, January 2025

Page No 13

1. *Wi-Fi 7: Wi-Fi 7 certified products will roll out in accordance with the Wi-Fi Alliance certification schedule throughout 2024. Wi-Fi 7 requires the latest Wi-Fi Alliance certification, Windows HLK certified device driver, hardware update, supported Windows OS version and compatible router. Wi-Fi 7/ 6E connectivity (6 GHz) with Windows 11 is limited and will leverage prior generation of Wi-Fi 6E/ Wi-Fi 6 speeds until drivers are available and hardware adoption increases. Wi-Fi 7 support with Dell ThinOS is coming soon and will operate on WiFi 6E/6 speeds when configured for Wi-Fi 7. Ubuntu OS will not support Wi-Fi 7 and will operate on Wi-Fi 6E/6 speeds when configured for Wi-Fi 7. Router requires a separate purchase. Wi-Fi 7/ 6E (6 GHz) connectivity is only available in select locations. Check availability with your service provider. The Bluetooth wireless card version may vary depending on the operating system that is installed on your system.

Page No 14

1. Dell Pro 14 has 5% greater screen area than the predecessor (Latitude 3450), in the same footprint. Based on internal testing. (November 2024)
2. The maximum screen to body ratio configuration of 89.8% corresponds to Dell Pro 16 with FHD+ display. Based on Dell internal testing, November 2024.
3. Wi-Fi 7: Wi-Fi 7 certified products will roll out in accordance with the Wi-Fi Alliance certification schedule throughout 2024. Wi-Fi 7 requires the latest Wi-Fi Alliance certification, Windows HLK certified device driver, hardware update, supported Windows OS version and compatible router. Wi-Fi 7/ 6E connectivity (6 GHz) with Windows 11 is limited and will leverage prior generation of Wi-Fi 6E/ Wi-Fi 6 speeds until drivers are available and hardware adoption increases. Wi-Fi 7 support with Dell ThinOS is coming soon and will operate on WiFi 6E/6 speeds when configured for Wi-Fi 7. Ubuntu OS will not support Wi-Fi 7 and will operate on Wi-Fi 6E/6 speeds when configured for Wi-Fi 7. Router requires a separate purchase. Wi-Fi 7/ 6E (6 GHz) connectivity is only available in select locations. Check availability with your service provider. The Bluetooth wireless card version may vary depending on the operating system that is installed on your system.
4. Based on testing using the Mobile Mark 2025 battery life benchmark test using Dell Pro 14 with Intel RPL-R U5-220U, 16GB RAM, 256GB PCIe SSD, Windows 11, FHD+ Non-Touch 400 Nits panel, and 55 Whr battery, February 2025. For more information about this benchmark test, visit www.bapco.com. Actual battery life may be significantly less than the test results and varies depending on product configuration and use, software, usage, operating conditions, power management settings and other factors. Maximum battery life will decrease with time. The stated Watt Hour (Whr) is not an indication of battery life.

Page No 15

1. Support for the fingerprint and smartcard reader options is coming May 2025 in ThinOS release 10.