

eq 02+ lifemonitor

DATA MONITORING THAT MAKES A DIFFERENCE







Choose the leading solution for real-time biometric data capture, smart data management, analysis tools and secure data storage.

The eq02+ LifeMonitor is ideal for monitoring human physiology across a wide range of applications including sports and exercise research, clinical trials, biofeedback, CBRN and military training and deployment.

It measures clinical grade cardiorespiratory, temperature and activity data from mobile people. Data is stored on the sensor and can be transmitted wirelessly for viewing on a mobile phone or computer.

Measurements

- | | |
|---|--|
|  ECG, HR, R-R interval |  Accelerometer, X,Y,Z, Activity |
|  Respiratory Rate |  Body position/ Movement |
|  Skin Temperature |  Oxygen saturation* |
|  Galvanic skin response* |  Core temperature capsule*/ Dermal Patch* |

*Measured using a compatible ancillary sensor

Unlock the power of the eq02+ LifeMonitor

Two shoulder straps ensure that the eq02+ LifeMonitor always stays in place, even during high ambulation.

Seamlessly integrated respiratory sensor and sweat optimised ECG electrodes ensure high accuracy data collection.



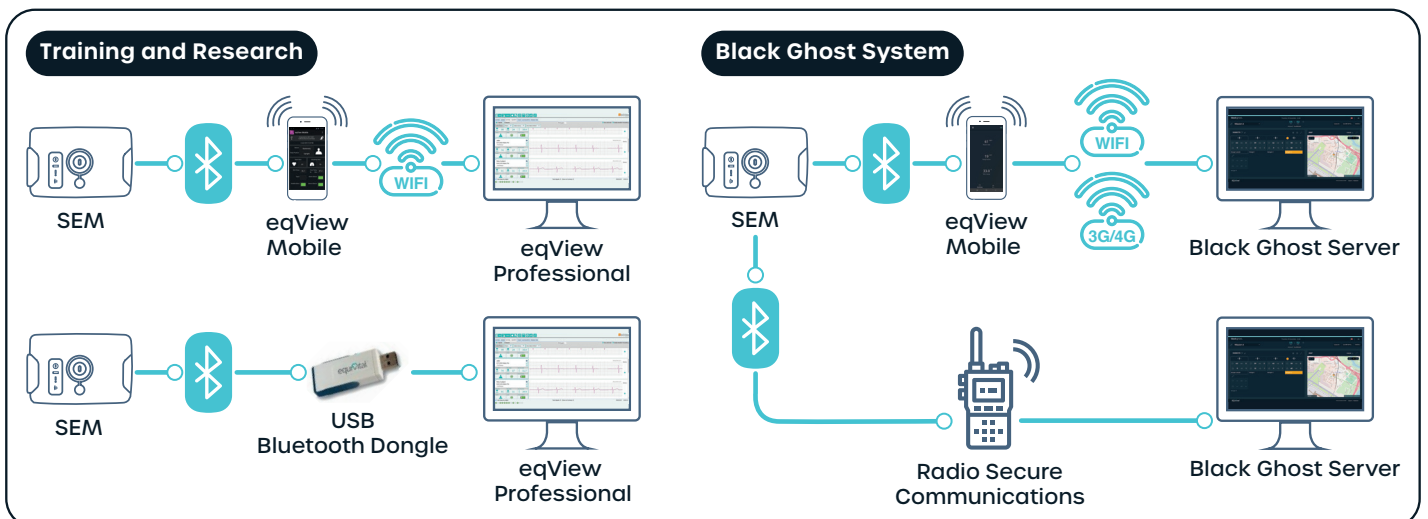
The LifeMonitor includes a medical grade infrared thermometer that measures temperature every 15 secs and a high resolution tri-axis accelerometer providing data for activity monitoring and gait analysis.

Benefits

- **2 Leads of 256Hz ECG:** Allows multichannel processing and reduction in noise from the ambulatory signal.
- **25Hz and 256Hz Tri Axis Accelerometer:** Configurable to the requirements of a specific application from motion and activity analysis to detailed gait analysis.
- **Wireless connection** to external sensors including core temperature pill and skin temperature patch - All data automatically time synchronised and stored on the SEM.
- **Wired ancillaries:** For extreme precision connect your galvanic skin response sensor to the eq02+ LifeMonitor solution via the SEM.
- **FDA and CE clearance:** Peace of mind that the system you are using meets the requirements of the rigorous medical device standards.

Real time data transmission

Data can be transmitted in real time from the SEM, via Class 1 Bluetooth, to a mobile phone or computer, for viewing and analysis.





How it works

The LifeMonitor comprises 2 elements; the Sensor Belt and the Sensor Electronics Module (SEM). The sensor belt features low profile sensors embedded into a biocompatible fabric. The SEM docks into a cradle on the left hand side of the sensor belt where it processes, stores and transmits physiological data.

The Sensor Belt

The sensor belt is made from a breathable, lightweight fabric to ensure that it is comfortable for long-term use. The two-shoulder strap unisex design provides a secure and comfortable fit for both male and female users.

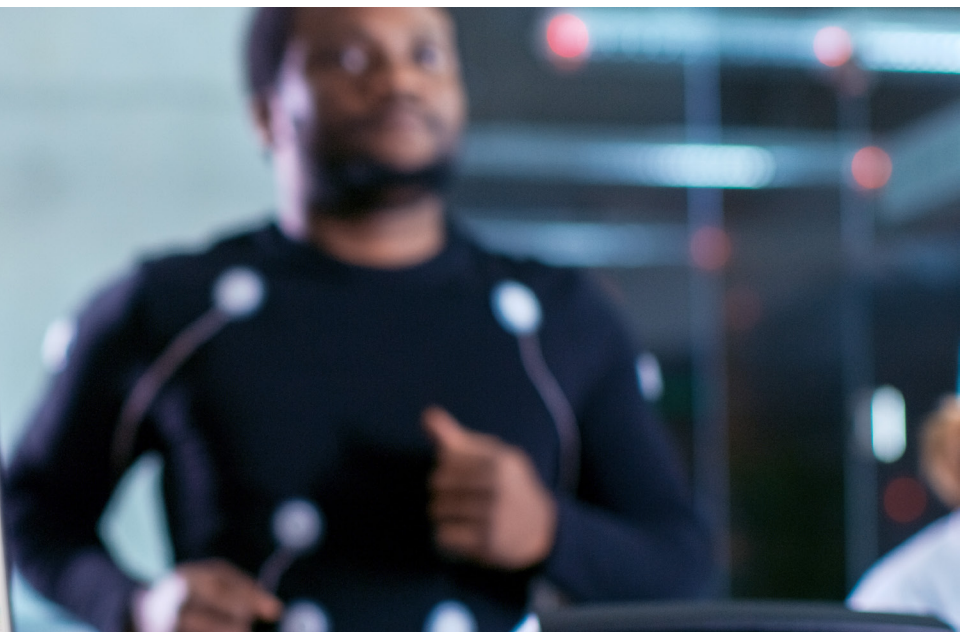
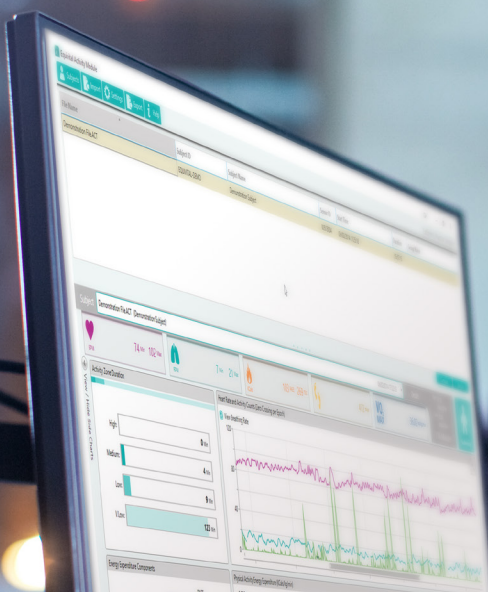
Key Features:

- Unisex
- Breathable, sports fabric
- Available in sizes covering 74-119cm (29in - 47in)
- Washable
- A belt extender can be worn to extend the belt by one size

The SEM

The SEM slots into the low profile belt cradle and its LEDs, visible when worn on body, provide status information including transmission, power and external sensor connections. It has a rechargeable Li Polymer battery which takes approximately an hour to reach full capacity. The SEM includes a medical grade infrared thermometer and tri-axis accelerometer.

All data is stored on an integral 8GB SD card, allowing retrospective data download and analysis. An external battery pack can be used to provide longer monitoring time between SEM charges. The SEM also supports a hot swap facility enabling the user to change over batteries in the external battery pack and reconnect during monitoring for uninterrupted use on long wears.

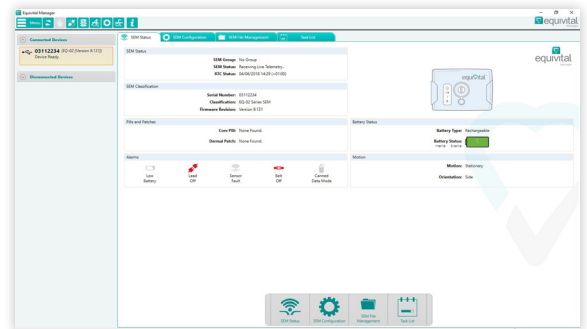


Software

Equival Manager

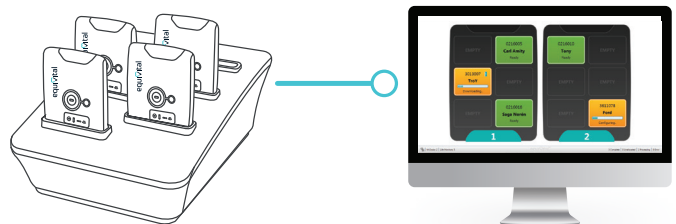
Equival Manager is a software application for viewing SEM status information, downloading and splicing SEM files, pairing Bluetooth ancillaries and extracting data to CSV or Excel files.

It is particularly useful for managing data and configuring a small number of SEMs, over USB.



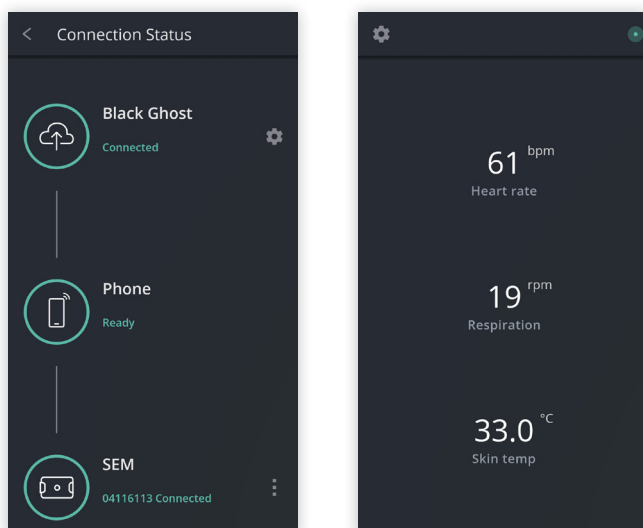
Equival Qiosk

Equival Qiosk is a software application that is intended for use in clinical trials and Black Ghost deployments where multiple SEMs and larger amounts of data need to be managed. It has a pre-configured set up for configuring and downloading data from a SEM, which is initiated without the need for user interaction. Data can automatically be uploaded to a local or remote database in a custom extract format when necessary. This is especially suitable where you need to maintain a consistent operating protocol between multiple researchers, sites or subjects.



eqView Mobile

eqView Mobile is an Android app that allows data from a SEM to be viewed in real time. It requires a one to one connection with the SEM over Bluetooth. Key data including ECG can be viewed on the app and transmitted on to either eqView Professional or Black Ghost.



eqView Professional

eqView Professional is a software tool for viewing live data including ECG and respiratory waveforms.

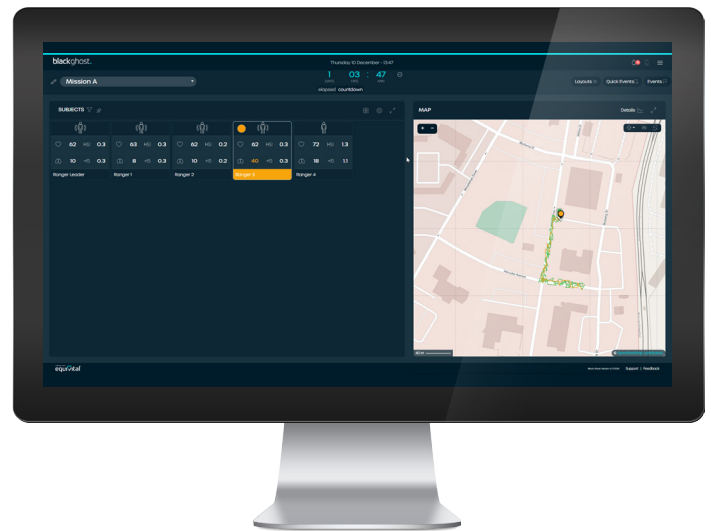
Subjects are assigned sensors, multiple sensors can be time synchronised and session event markers can be created during the session.



Black Ghost

Black Ghost is a web application tailored to the needs of CBRN, military and emergency first response users.

It combines SEM and location data, enabling small and large teams to be monitored in training or deployment missions.



System Developers Kit (SDK)

Supported by our excellent in house team, Equival offers developers a choice of .NET and Java SDKs.

These are designed to allow developers the ability to embed Equival eqO2+ LifeMonitor data into their own applications.



Support

Support options to suit your needs

Equival has multiple ways to assist you with your eq02+ LifeMonitor and chosen software solution.

With a team of experts on hand, either on the phone, over email or via our comprehensive web support system. We have a library of support FAQs, articles, videos and step-by-step guides to assist you in setting up and getting the most out of your data solution.

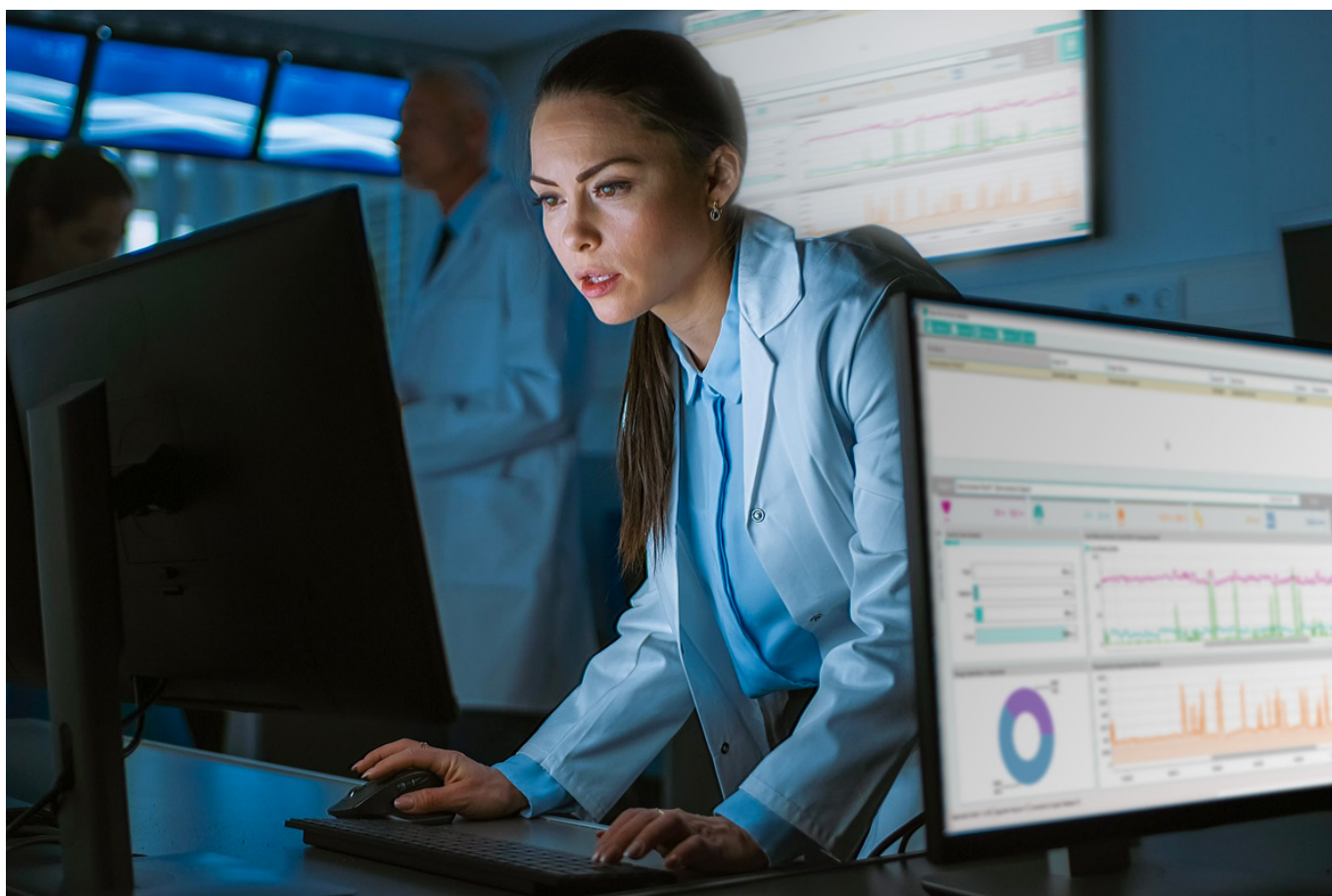
Visit <https://support.equival.com> to find out more.

Partnerships

Technology partnerships to enhance data capture & analysis

We have partnered with AdInstruments with ADI Labchart and VivoSense to continue our commitment to offer accurate data that can be exported, viewed and analysed into other software provider's systems simply and easily.

Our eq02+ LifeMonitor can be paired with our partners' products including the core temperature pills from BodyCAP and VitalSense and dermal patches from VitalSense. The Nonin Xpod provides oxygen saturation and photoplethysmography (PPG) waveform information.



eq02+ LifeMonitor Key Specifications

| Parameter | Specification |
|--------------------------|---|
| Memory | 8GB |
| Power | Li-Po rechargeable cell |
| Li Polymer recharge time | Recharge from flat in 1 hour |
| Communications | Class 1 Bluetooth 2.1, 100m operating range |
| Connectivity | USB 2.0 compatible |
| Configuration | Via USB |

| Physical specifications | SEM |
|--------------------------|-------------------------------|
| Weight | 38g |
| Size | 78mm x 55mm x 11mm |
| Operating temperature | -10 to +50°C |
| Operating humidity | 0 to 95% RH Non-condensing |
| Operating altitude | Up to 30,000ft |
| Water ingress protection | IPx7 |

| Signals | Sampling rate | Resolution |
|------------------|---------------|------------|
| ECG | 256Hz | 10 bit |
| Respiratory | 25.6Hz | 10 bit |
| Skin temperature | 15 seconds | 0.1°C |
| Accelerometer | 25.6 or 256Hz | 12 bit |

| Physiological parameters | Reporting range |
|--------------------------|---|
| Heart rate | 25-240bpm |
| Breathing rate | 0-70 Breaths per minute |
| Skin temperature | -10°C to +50°C ±0.3°C Accuracy using IR Thermometer at temperature of interest |
| Body position | All orientations Includes fall detection and motion |

| Approvals | |
|-----------|--|
| Europe | CE Certified, EU Device Classification Class IIb |
| USA | FDA Device Classification Class II |

| Core Temperature | |
|------------------|---|
| BodyCAP | Accuracy: +/- 0.2°C in the range 25°C - 45°C Data sent to eqManager |
| VitalSense | Accuracy: +/- 0.1°C in the range 25°C - 50°C Data sent direct to the SEM |

Battery Life Data

| SEM use case | Operating life | Operating life with external battery pack connected* |
|--|----------------|--|
| All SEM data recorded | 48hrs | 150hrs |
| All SEM data recorded with core temperature pill receiver on** | 18hrs | 60hrs |

*Using 2 x AA Energizer Ultimate Lithium Batteries

** Only applies to Phillips core pill.

Equivital Ltd Unit F, Buckingham Business Park, Swavesey, Cambridge CB24 4UQ, UK
T: +44 (0) 1954 233430 F: +44 (0) 1954 233431 E: info@equivital.com