

DELL Technologies



# Dell ThinOS

---

The most secure thin clients with Dell ThinOS<sup>1</sup>.



# Dell thin clients with ThinOS

## Built to fit your virtual workspace

Dell's exclusive ThinOS is the most secure thin client operating system<sup>1</sup> delivering a rich user experience with the latest high-performance desktop virtualization protocols and support for popular unified communications solutions to keep users at their productive best.

### Secure by Design

No sensitive data or personal information exposed on the local device. With a closed architecture, system hardening to limit attack surfaces, unpublished APIs and encrypted data and files exclusively packaged by Dell, ThinOS is virus and malware-resistant.

### User Friendly

Dell ThinOS is deployment-ready for leading virtual workspaces with a comprehensive set of Dell software and technology partner components. The new modern desktop mode and optimization for in-demand collaboration tools enhance the user experience.

### End-to-end expertise

Dell Technologies is your technology partner to work and innovate everywhere. We have the end-to-end expertise and can provide all the VDI components from the data center to the endpoint including a complete set of modern, high performance thin client solutions.

### Modern management

Effortless deployment and dynamic device configuration and monitoring for modern anytime/anywhere management from the cloud.



### Simplified User Experience

The new modern desktop offers a quick start experience and an intuitive taskbar to access session controls and device configuration.

### From zero to productivity, instantly

Wyse Management Suite Pro on Public Cloud centrally configures, monitors, and manages Dell endpoints and scales from one to hundreds of thousands of devices to meet all levels of deployment.

### Rich ecosystem

Available in a laptop, all-in-one and desktop form factor including the new OptiPlex 3000 Thin Client, so whether you are in the office, remote or both, it works for you.

### Single call support

Gain efficiency with 24x7 single source of support for the full thin client solution. Whether you need help with hardware, software, configuration, or troubleshooting, you can contact a single point of contact and get expert guidance.

▶ [Click here to see ThinOS interactive demo](#)

# The most secure thin client OS

## Secure by design

**Ultimate Security:** Designed to minimize risk with a closed architecture, unpublished APIs, hardened surfaces, secure boot, and device-specific flash encryption.

**Trusted Endpoint:** Support for popular authentication methods, compliance standards, and non-persistent information to protect session data and connect confidently from anywhere.

**Achieve Compliance:** Ensure confident access to virtual workspaces with intrinsic security built into ThinOS and centralized control.



### Base Operating System

With no facility to run or invoke external applications nor any ability to store user data on the device, Dell ThinOS has practically no opportunity to execute typical security exploits. As virtual desktop infrastructures centrally store and manage all data and applications on a server, utilizing thin clients with ThinOS helps organizations to further prevent the loss and/or theft of sensitive information and assist organizations in their efforts to remain compliant with privacy regulations by protecting the endpoints from attack.



### Vulnerability Protection

Many vulnerabilities, viruses, and malware are transferred via internet browsers, email attachments, or by opening infected files in the local storage devices. These types of vulnerabilities are prevented in ThinOS, as users do not have access to a local browser, and there is no run-time system for malware to latch onto or be executed. All internet and email applications are delivered via the centrally managed desktop virtualization environment where threats can be intercepted and managed without risks introduced via attacks on the edge device.



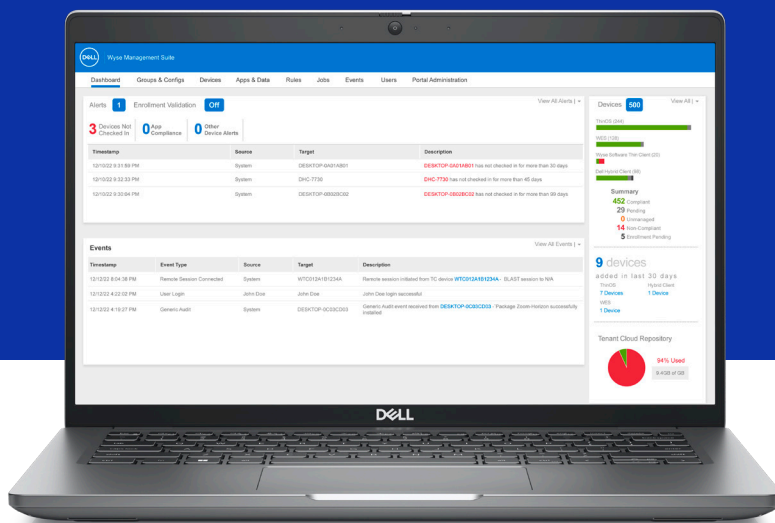
### Secure by design

With a closed architecture, system hardening to limit attack surfaces, and unpublished API, encrypted data, and files exclusively packaged by Dell, ThinOS is virus and malware-resistant.

# Simplified IT Operations

Wyse Management Suite is a flexible hybrid cloud solution that allows to centrally configure, monitor, manage and optimize Dell thin client solutions, anytime, anywhere.

Wyse Management Suite is ideal for businesses small, large and in-between. With multiple versions, our solution meets all levels of deployment.



Cloud-first



Web browser access



Scalability & high availability



Automation & reporting



Enterprise-class administration

## Pro Version

Efficient hybrid cloud management solution. Per seat, per year subscription with the option of either on-premises deployment or public cloud – or a combination of both with floating license allocation between private and public clouds.

### [Free Trial](#)

Wyse Management Suite Pro comes with Dell ProSupport<sup>4</sup> for Software - ProSupport for Software offers 24/7 access to in-region advanced technology experts who take action to resolve critical issues when they arise, so you can focus on the strategic work that moves your business ahead.

## Standard Version

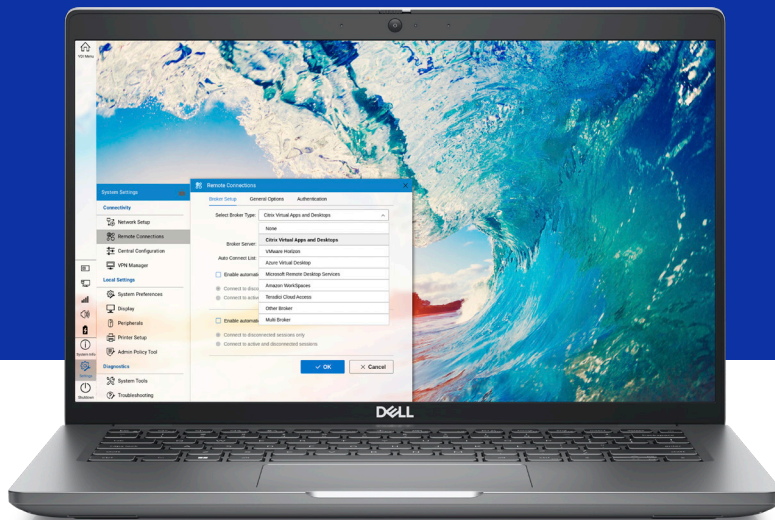
Free download. Improve your productivity and enjoy streamlined deployment and maintenance with a free, on-premises management tool for small deployments.

### [Request free 1-year license](#)



# A Productive VDI experience

Experience full-screen virtual session management and device configuration with a modern, user-friendly interface.



## Dell ThinOS Modern Desktop

The new modern desktop mode is a Dell proprietary user interface enjoyed by ThinOS customers that is designed to simplify virtual workspace session management and device configurations. This taskbar provides full-screen session capabilities not available on Windows and Linux clients.

### High-quality End-user Experiences

Users enjoy an enhanced user experience through the use of a simplified session taskbar for session controls and device configuration.

## Purpose-built for VDI

Experience a rich user experience with the latest high-performance VDI protocols. Ready to connect to Citrix®, Microsoft®, VMware®, and Amazon WorkSpaces environments right out of the box, this lightweight firmware base has minimal overhead and a rapid boot time, delivering instant-on user productivity.

[Click here to see ThinOS video](#)

[Click here to see ThinOS interactive demo](#)

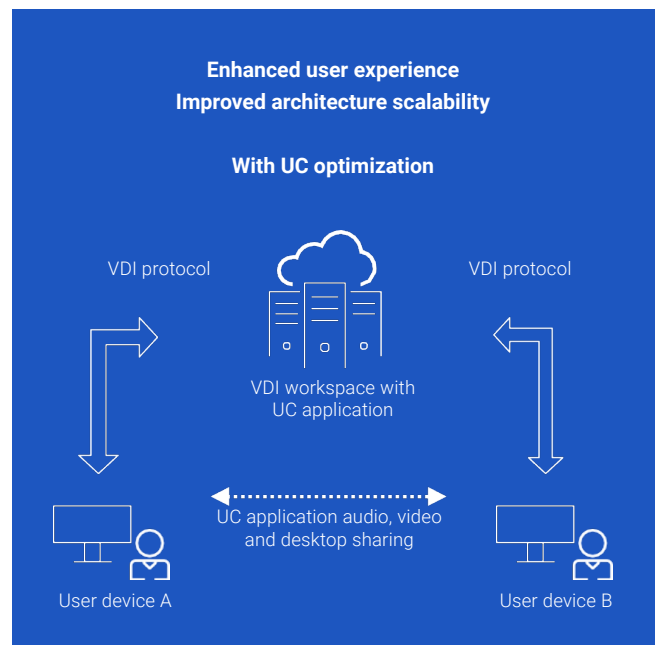
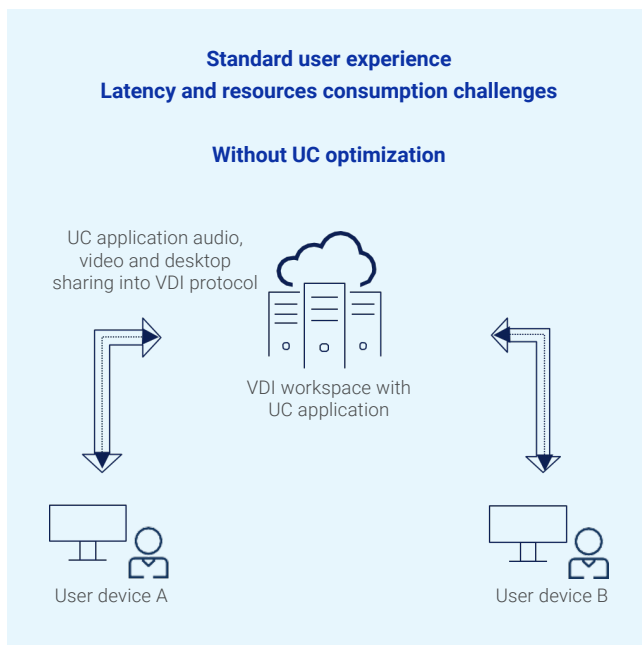
# A More Collaborative VDI experience

The modern workforce demands real-time collaboration through unified communications solutions. Live audio conferencing, video conferencing and desktop sharing can require varying client resource workloads that can affect overall performance whether you are running your virtual desktop infrastructure on premises, in the cloud or as a cloud-hosted desktop service.

Enable your employees to work anywhere with anyone by combining the security and manageability of Dell thin client solutions with the communication and collaboration benefits of the most popular unified communications solutions with VDI optimization.

VDI optimization delivers a rich user collaboration experience, leverages user device resources for media rendering, and offers optimized point-to-point media delivery. Plus, VDI optimization offloads media processing from the VDI server whenever possible and offers users optimized architecture with performance and management benefits.

## Collaborate more efficiently



[▶ Learn more >](#)

# Meet The Family



## OptiPlex 3000 Thin Client

The OptiPlex 3000 Thin Client delivers a quiet, durable computing experience and makes for easier multitasking with support for up to three displays at 4K resolution. Intel® Quad Core processors bring instant and seamless access to digital and virtual workspaces. An all-new variety of mounts offers flexibility in setting up a work environment.

[▶ view 360° product demo >](#)



## OptiPlex All-in-One<sup>14</sup>

A 24" all-in one desktop with smart collaboration features, up to the latest Intel® Core™ i5 and ergonomic stand options. Crystal-clear images and video come through on 24" Full HD Touch and Non-Touch panels. With the TUV Low Blue Light certified non-touch panel, you can work comfortably with reduced eye strain.

[▶ view 360° product demo: 35 Watts >](#)

[▶ view 360° product demo: 65 Watts >](#)



## Latitude 3440

Modern design with up-leveled essential productivity features for every business. A full HD 14" display, built-in support for unified communications and rich connectivity options deliver a productive user experience and faster and smarter collaboration.



## Latitude 5450

This mainstream business laptop offers scalable performance options, enterprise-level security and innovative use of sustainable materials<sup>10</sup>. Quickly connect to peripherals with a broad range of ports including 2x USB Type C Thunderbolt™ 4.0 and HDMI 2.1.

[▶ view 360° product demo >](#)

FEATURE	TECHNICAL SPECIFICATION
<b>OPERATING SYSTEM</b>	Dell ThinOS release 2405
<b>SUPPORTED DELL THIN CLIENT SOLUTIONS<sup>4</sup></b>	<ul style="list-style-type: none"> <li>• OptiPlex 3000 Thin Client</li> <li>• OptiPlex All-in-One (Gen ID 7420, Gen ID 7410)</li> <li>• Latitude 3440</li> <li>• Latitude 5440</li> <li>• Latitude 5450</li> <li>• Latitude 3420<sup>14</sup> (requires Ubuntu® Linux® 20.04 LTS, 64-bit and DCA enabler)</li> <li>• OptiPlex 5400 All-in-One<sup>14</sup> (requires Ubuntu® Linux® 20.04 LTS, 64-bit and DCA enabler)</li> <li>• Wyse 5070 thin client</li> <li>• Wyse 5070 Extended thin client</li> <li>• Wyse 5470 All-in-One thin client</li> <li>• Wyse 5470 mobile</li> </ul>
<b>VIRTUAL ENVIRONMENT SUPPORT</b>	<p>Amazon WorkSpaces (via WorkSpaces Streaming Protocol (WSP))                      Citrix Virtual Apps and Desktops™ (formerly XenDesktop/XenApp)                      Citrix Workspace™                      Microsoft® Windows Terminal Server                      Microsoft® Azure                      Microsoft® Azure Virtual Desktops including support of Windows 365                      VMware Horizon®</p>
<b>VMWARE HORIZON</b>	<p>VMware Horizon client                      Blast extreme/H.264                      Blast UDP/BEAT                      Blast Network Condition Settings                      Blast High Color Accuracy                      Real-Time Audio-Video Support                      Microsoft Teams and SfB optimization                      USB Redirection                      SecureID Authentication                      Smartcard Authentication                      Support for PCoIP<sup>11</sup>                      PCoIP Relative Mouse<sup>11</sup>                      TWAIN                      Unified Access Gateway support with device certificate authentication                      SAML Authentication (3<sup>rd</sup> Party Identity Provider)</p>
<b>CITRIX CLIENT</b>	<p>Citrix Workspace app                      Native Storefront authentication                      HDX Mediastream                      HDX Multi-stream                      HDX Plug-n-Play                      HDX 3D, HDX 3D Pro                      HDX Realtime Optimization Pack (Skype for Business)                      Microsoft Teams VDI Optimization                      Seamless Windows                      Citrix Access Gateway and Citrix Secure Gateway support (direct LDAP or RSA authentication)                      Desktop restart (XenDesktop)                      Session prelaunch and lingering                      Optimized 2D drawing                      User session roaming                      UDP Audio                      Bandwidth estimation                      Monitor rotation and L-shaped desktop                      Local text echo (zero latency click)                      Smartcard / proximity card authentication &amp; redirection                      Browser content redirection (BCR)                      Enlighten data transport (EDT)                      Workspace Mode and Desktop View Toolbar                      SAML/Azure AD support</p>
<b>MICROSOFT COMPATIBLE CLIENT</b>	<p>Microsoft Azure Virtual Desktop client                      Desktop and Remote App (Immersive)                      Single Touch                      Audio in/out                      USB Disk Mapping                      Clipboard text and Object                      MultiMonitor Support                      H.264 decoding without AVC-444                      Local printer mapping                      NLA                      Imprivata                      Microsoft Teams VDI Optimization                      Zoom VDI Optimization</p>
<b>UNIFIED COMMUNICATIONS OPTIMIZATION</b>	<ul style="list-style-type: none"> <li>• Microsoft Teams VDI Optimization (for Microsoft Azure Virtual Desktop, Citrix and VMware)</li> <li>• Microsoft Skype for Business VDI Optimization (for Citrix and VMware)</li> <li>• Zoom Cloud Meetings VDI Optimization (for Microsoft Azure Virtual Desktop, Citrix and VMware)</li> <li>• Cisco Jabber, Webex VDI Meetings Webex Teams</li> <li>• RingCentral</li> <li>• Avaya (software package available from respective vendor)</li> </ul>
<b>BUILT-IN CONNECTIVITY FEATURES</b>	<ul style="list-style-type: none"> <li>• Open Connect VPN client</li> <li>• Captive Portal enabling connection to public WiFi networks</li> <li>• Web authentication for select brokers</li> <li>• Imprivata and Identity Automation QwickAccess (formerly Healthcast) support</li> </ul>



FEATURE	TECHNICAL SPECIFICATION
OPERATING SYSTEM	Dell ThinOS release 2405
NETWORK CONNECTIVITY	Ethernet 10/100/1G support Wireless 802.11 support (2.4GHz and 5GHz) 802.1x Support for fiber network with OptiPlex 3000 Thin Client and optional SFP module and transceiver
USER INTERFACE	Classic mode (uses a light theme): designed for people using windowed published apps and desktops. Modern desktop mode (uses a dark or light theme): provides a unique easy to use experience with simplified full-screen virtual session management and device configuration.
USER INTERFACE LANGUAGE SUPPORT	English, Italian, French, German, Spanish, Simplified and Traditional Chinese, Korean, and Japanese
SECURITY FEATURES	Closed architecture, no published APIs, no command shell, hardened surfaces, device specific flash encryption TPM support <sup>12</sup> Secure Boot
COMPLIANCE	IPv6 capable <sup>12</sup> FIPS 140-2 capable <sup>12</sup>
THINOS FIRMWARE	Dell ThinOS firmware is available as a free download from the eligible thin client page on <a href="http://www.Dell.com/Support">www.Dell.com/Support</a> . Refer to the Release Notes on <a href="http://dell.com/support">dell.com/support</a> for detailed feature matrix
ENDPOINT MONITORING SUPPORT	Basic telemetry features with Wyse Management Suite 4.3 (or above) Support for monitoring solutions from ControlUp, eG Innovations, Liquidware, Lakeside and UMX (not included, available from respective vendors)
MANAGEMENT OPTIONS	Wyse Management Suite 4.4 (or above) Pro edition recommended for comprehensive management and hybrid cloud deployment - <a href="#">Free trial</a> Wyse Management Suite 4.4 (or above) Pro edition provides support for Wave Deployment to selectively update clients in a device group and Peer-to-Peer Remote Shadow enabling shadowing from a private cloud or the public cloud of client devices including remote (home) locations.  Wyse Management Suite 4.4 (or above) Standard edition available for basic on-premises management – <a href="#">Request free license</a>

# Your thin client solution in 3 easy steps

Meet the evolving needs of the workforce and increase efficiency without compromising on security with Cloud Client Workspace software and Dell thin client solutions. Pair our thin client software options with industry-leading Latitude and OptiPlex systems for a personalized VDI endpoint solution delivering smarter user experiences and stronger security.

## 1 Select the Thin Client Software

### Dell ThinOS<sup>1</sup>

The most secure thin client OS\* is purpose-built for VDI to deliver a simplified end-user and IT experience.

### Dell Hybrid Client<sup>1</sup>

Modern thin client software with incredible flexibility allowing secure access to applications and data, wherever they live – whether that's in the data center, the cloud or the local device.

### Windows 10 IoT Enterprise<sup>1</sup>

Power and familiarity of Windows® in a thin client optimized by Dell with robust security features and flexible management options.

## 2 Choose a Form Factor

Laptop, All-in-One and desktop form factor options give you the freedom to create a personalized virtual workspace. Work in confidence anywhere and enable a more productive and collaborative VDI experience with our new premium devices<sup>2</sup>.



### OptiPlex 3000 Thin Client

The OptiPlex 3000 Thin Client delivers a quiet, durable computing experience and makes it easier to multi-task.



### OptiPlex All-in-One

Work in comfort and style with a sleek, new All-in-One design with collaboration and security features built in.



### OptiPlex Micro Form Factor<sup>1</sup>

Ultra-compact desktop designed to free up workspaces. Supports up to 4 displays.



### Latitude 3440<sup>1</sup>

Tackle tasks with this modern laptop equipped with upgraded features.



### Latitude 5450

Achieve the perfect balance with this scalable laptop that boast impressive power.

## 3 Add Wyse Management Suite Pro

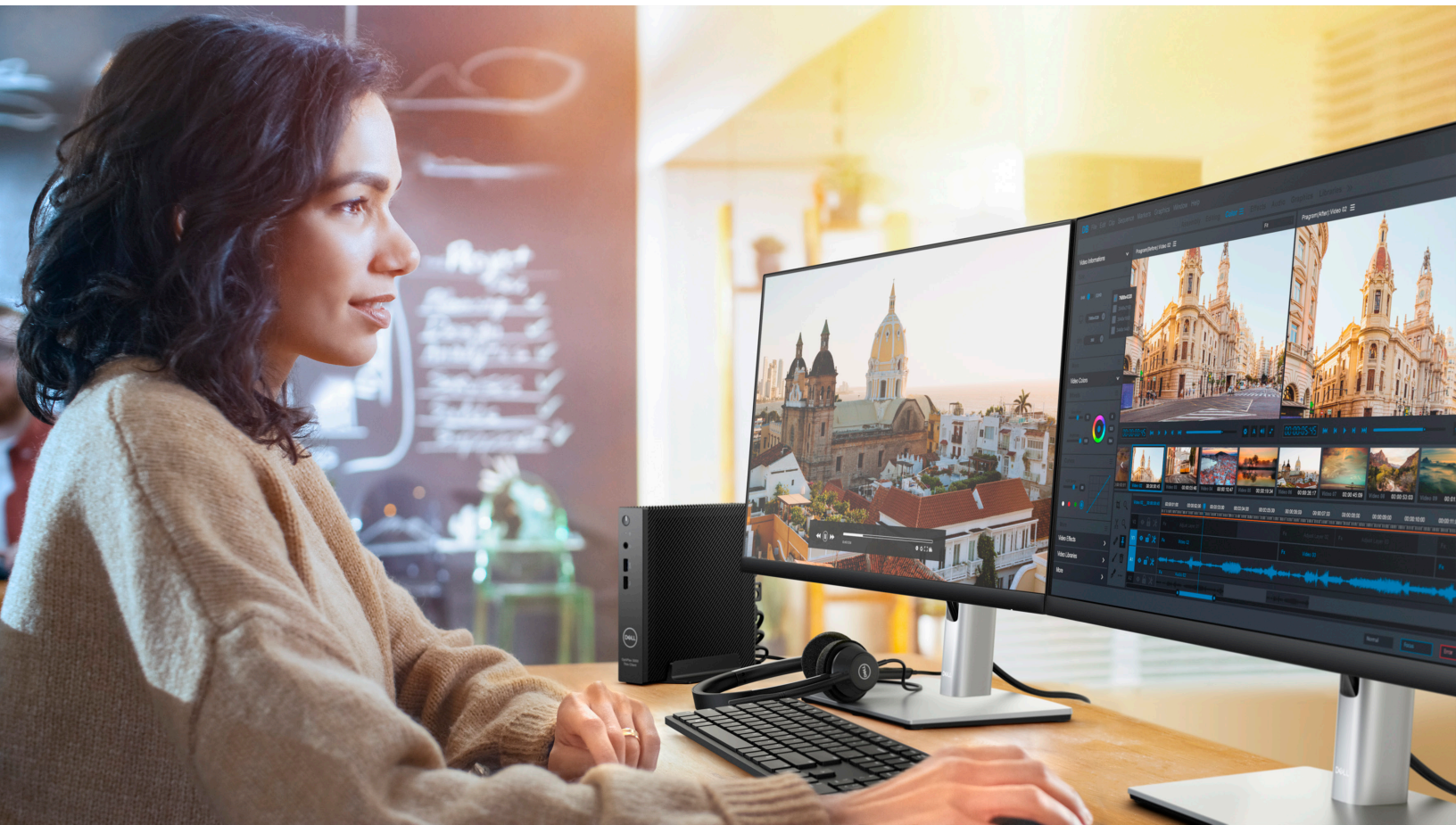
An enterprise-class solution that provides modern and secure management of all your Dell thin client solutions from anywhere. Securely manage a distributed workforce with a hybrid cloud solution designed to meet all deployment levels.

[Click here to learn more about Cloud Client Workspace.](#)

\* Based on Dell analysis of Dell ThinOS v. competitive products, January 2024. CLM-006983

<sup>1</sup> Offering may vary by country and by configuration and operating system. Some items may be available after product introduction. For complete details, refer to the Setup and Specifications published on [www.dell.com/support](http://www.dell.com/support). Dell ThinOS is not available to configure with the OptiPlex Micro Form Factor. Dell Hybrid Client (v2.5 or above) is sold separately as a customer install option with the OptiPlex Micro Form Factor (requires the device to be configured with 8 GB Memory, 128 GB or higher capacity SSD/HDD and Ubuntu Linux 22.04 with Dell Client Agent Enabler (DCA-Enabler).

<sup>2</sup> Product images are not to scale. Refer to specifications for accurate measurements



### Secure by design

Work confidently from anywhere with solutions designed to augment the security of your VDI and cloud environments.

### Unified approach to I.T.

Modern management with hybrid cloud deployment provides greater control and agility.

### Optimized user experience

Access digital and virtual workspaces with unprecedented simplicity and flexibility.

### Learn more at [Dell.com/CloudClientWorkspace](https://www.dell.com/CloudClientWorkspace)

#### Important Information/Claims

1. Based on Dell analysis of Dell ThinOS v. competitive products, January 2024.
2. Gartner, Forecast Analysis: Remote and Hybrid Workers, Worldwide, 02 June 2021 <https://www.gartner.com/en/newsroom/press-releases/2021-06-22-gartner-forecasts-51-percent-of-global-knowledge-workers-will-be-remote-by-2021>
3. Wyse Management Suite Pro license activation is required.
4. Dell ProSupport availability and terms vary by region. See [dell.com/servicecontracts/global](https://www.dell.com/servicecontracts/global).
5. Offering may vary by region. Some items may be available after product introduction. For complete details, refer to the Technical Guidebook published on [www.dell.com/support](https://www.dell.com/support)
6. Based on Dell analysis, January 2024, measuring the automated deployment using Wyse Management Suite of the OptiPlex 3000 Thin Client with factory-installed Dell ThinOS. Actual results will vary depending on system, network and IT environment configuration. CLM-003540
7. Based on Dell analysis, January 2024, measuring the automated configuration using Wyse Management Suite of the OptiPlex 3000 Thin Client with factory-installed Dell ThinOS. Actual results will vary depending on system, network and IT environment configuration. CLM-003541
8. Based on Dell analysis of Dell ThinOS v. competitive products, January 2024.
9. Offering may vary by region. Some items may be available after product introduction. For complete details, refer to the technical documentation published on [www.dell.com/support](https://www.dell.com/support).
10. Not all features and services are available in all countries or sales segments/customers. Contact your Dell Technologies Services Representative for availability.
11. PCoIP is only available with new devices shipping with ThinOS 9.1 (or higher) or devices upgraded from ThinOS 8.6 with PCoIP
12. Support and features depending on customer environment and by region, partner broker, VDI protocol and configurations.
13. Requires Wyse Management Suite Pro.
14. Requires Dell ThinOS (2303 or above) activation license with Wyse Management Suite Pro and Dell ProSupport for Software seat license sold separately. The Latitude 3320 and OptiPlex 5400 All-in-One systems need to be configured with 8 GB Memory, 128 GB or higher capacity SSD/HDD and Ubuntu Linux with Dell Client Agent Enabler (DCA-Enabler). For more details, refer to the Dell ThinOS Installation and ThinOS Activation License User Guide on [www.dell.com/support](https://www.dell.com/support).
15. Our most sustainable commercial PC developed with 64% more recycled and renewable plastics by weight than our previous generation models