



# Dell thin clients with Windows 10 IoT Enterprise

Power, convenience, and familiarity of Windows®  
in a thin client solution optimized by Dell.

# Dell thin clients with Windows 10 IoT Enterprise

## Built to fit your virtual workspace

Combining Dell's optimizations in management and user experience with a rich Windows ecosystem, Windows 10 IoT Enterprise delivers immersive productivity for digital workspaces and address the needs of regulated industries such as healthcare, retail, government, financial services or education.

### Tailored to your needs

With hybrid cloud deployment and floating license allocation, manage your Dell devices from on-premises (data center), hybrid or public cloud for greater control and agility. The cloud-first, multi-tenant model supports your growing business requirements.

### User Friendly

Experience a shorter time to productivity and the familiarity of a Windows OS requiring less user training.

### Flexible management options

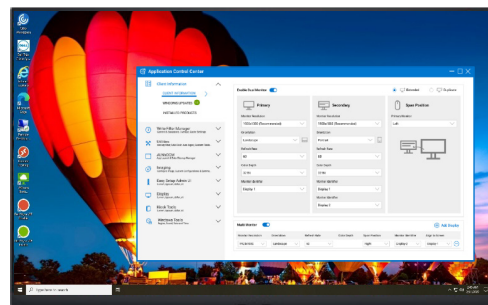
Choose from Dell's exclusive Wyse Management Suite, support from VMware Workspace ONE<sup>®1</sup> for a unified digital workspace platform and Microsoft Endpoint Configuration Manager<sup>1</sup> to take advantage of existing investment

### Best-in-class security

Experience enhanced protection against modern security threats, less disruption in your workday and less time managing remediation of devices with Dell added-value software securing the desktop experience.

### Rich collaboration experience

Support for VDI plugins locally enables high-quality media streams and delivers immediate benefits to the business with real-time communication and improved collaboration.



### Ready for VDI

Built-in suite of comprehensive and enhanced clients for popular VDI environments

### Intuitive IT interface

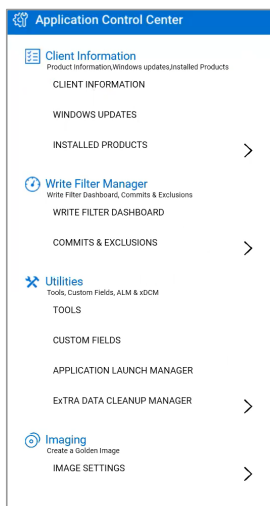
Deploy systems, manage embedded applications and control the write filter through an intuitive interface with Dell Application Control Center

# Why Windows 10 IoT Enterprise with Dell thin clients?

Experience the benefits of our productivity applications designed to make Dell thin client solutions easier to deploy and adapt to your specific needs.

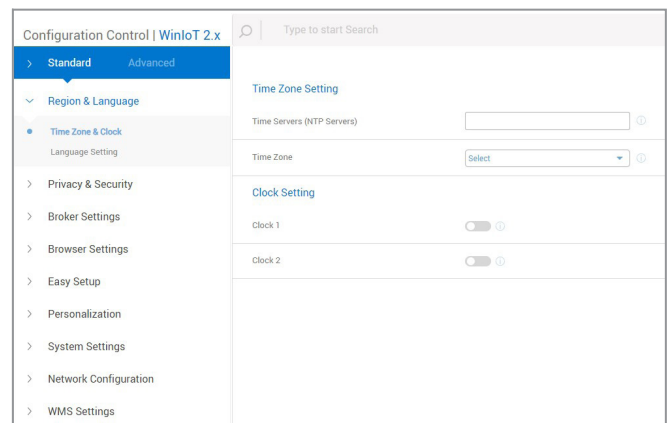
## Intuitive interface

Control system configurations, embedded applications and utility tools including write filter through an intuitive, easy to navigate interface with Dell Application Control Center.



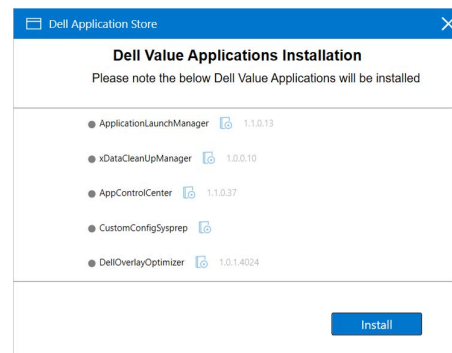
## Configuration made easier

A modern and intuitive configuration interface provides fast and easy navigation to the settings. And the new Search functionality helps IT users to quickly locate relevant configuration options and enables a streamlined and more efficient experience.\*



## All apps at your fingertips

Deploy partner components and client applications made available through quarterly releases from a convenient interface with Dell Application Store.



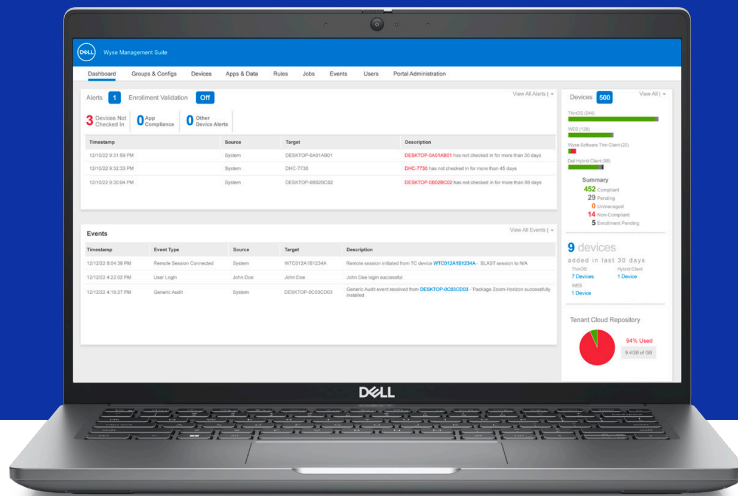
**40%**  
More performance  
than predecessor<sup>2</sup>

**OptiPlex 3000 Thin Client  
with Windows 10 IoT Enterprise**

\* Wyse Management Suite 4.1 with Configuration UI package is required. For complete details, refer to the technical documentation published on [www.dell.com/support](http://www.dell.com/support).

# Simplified IT Operations

Wyse Management Suite is a flexible hybrid cloud solution that allows to centrally configure, monitor, manage and optimize Dell thin client solutions, anytime, anywhere. Wyse Management Suite is ideal for businesses small, large and in-between. With multiple versions, our solution meets all levels of deployment.



Cloud-first



Web browser access



Scalability & high availability



Automation & reporting



Enterprise-class administration

## Power your workday

Manage up to one million endpoints<sup>3</sup> from the public and private cloud. Manage from anywhere with a mobile app for real-time endpoint modern management.

## Deploy with ease

From zero to productivity instantly with Wyse Management Suite Pro on public cloud<sup>3</sup>. Automated processes and intelligent insights with powerful dynamic device-grouping and rules-based automation to deliver a proactive management approach.

## Security built-in

Highly secure, Wyse Management Suite uses HTTPS-based communications, two factor authentication and roles-based provisioning.

## Efficient productivity

One tool that does it all: Easily manage your Dell endpoints, configure system and BIOS configurations, complete hardware inventories and view event and audit logs for a centralized management experience.

# Meet The Family



## OptiPlex 3000 Thin Client

The OptiPlex 3000 Thin Client delivers a quiet, durable computing experience and makes for easier multitasking with support for up to three displays at 4K resolution. Intel® Quad Core processors bring instant and seamless access to digital and virtual workspaces. An all-new variety of mounts offers flexibility in setting up a work environment.

[▶ view 360° product demo](#)



## OptiPlex All-in-One<sup>14</sup>

A 24" all-in one desktop with smart collaboration features, up to the latest Intel® Core™ i5 and ergonomic stand options. Crystal-clear images and video come through on 24" Full HD Touch and Non-Touch panels. With the TUV Low Blue Light certified non-touch panel, you can work comfortably with reduced eye strain.

[▶ view 360° product demo : 35 Watts](#)

[▶ view 360° product demo : 65 Watts](#)



## OptiPlex Micro Form Factor<sup>9</sup>

An ultra-compact desktop designed to free up workspaces. Features native support for up to 4 displays.\*

[▶ view 360° product demo](#)



## Latitude 3440

Modern design with up-leveled essential productivity features for every business. A full HD 14" display, built-in support for unified communications and rich connectivity options deliver a productive user experience and faster and smarter collaboration.



## Latitude 5450<sup>5</sup>

This mainstream business laptop offers scalable performance options, enterprise-level security and innovative use of sustainable materials<sup>10</sup>. Quickly connect to peripherals with a broad range of ports including 2x USB Type C Thunderbolt™ 4.0 and HDMI 2.0.

# Recommended Accessories<sup>9</sup>

Empower users with the freedom of choice and reliability with accessories that are designed and tested to work Better Together with thin client solutions from Cloud Client Workspace.

## OptiPlex 3000 Thin Client and OptiPlex Micro Form Factor



**Dell 24 Monitor – P2422H**

Stay productive no matter where you work with this sleek 23.5" FHD monitor with ComfortView Plus.



**Dell Pro Wireless Keyboard and Mouse – KM5221W**

Get productive with a quiet, full-size keyboard and mouse combo with programmable shortcuts and 36 months battery life.



**Dell Premier Wireless ANC Headset – WL7022**

Collaborate with ease anywhere with this Teams certified wireless headset.

## OptiPlex All-in-One



**Dell 24 4 FHD Monitor - P2423D**

Stay focused on a 23.8-inch QHD monitor optimized to deliver high performance details and clarity.



**Dell Premier Multi-Device Wireless Keyboard and Mouse - KM7321W**

Get productive with this premium full-size keyboard and sculpted mouse combo featuring programmable shortcuts and 36 months battery life.



**Dell Wired Headset - WH3024**

Experience uninterrupted communication with this wired headset, designed with productivity and comfort in mind for all-day conferencing.

## Latitude 3440 and Latitude 5450



**Dell 24 Video Conferencing Monitor - C2423H**

Stay in sync on a 24-inch FHD monitor with built-in conferencing essentials, low blue light and an eco-friendly design.



**Dell Pro Webcam – WB5023**

Experience industry leading video quality and picture clarity in any lighting with this intelligent 2K QHD webcam.



**Dell 7-in-1 USB-C Multiport Adapter - DA310**

Compact and portable 7-in-1 USB-C mobile adapter provides superb video, data connectivity and up to 90W power pass-through to your PC.

FEATURE	TECHNICAL SPECIFICATIONS <sup>5</sup>
OPERATING SYSTEM	Windows 10 IoT Enterprise LTSC 2021 (quarterly release 2402)
DELL CLIENT DEVICE OPTIONS <sup>1</sup>	<ul style="list-style-type: none"> <li>• OptiPlex 3000 Thin Client</li> <li>• OptiPlex All-in-One</li> <li>• OptiPlex Micro Form Factor (Plus version)</li> <li>• Latitude 3440</li> <li>• Latitude 5450</li> </ul>
SERVER OS INFRASTRUCTURE SUPPORT	<ul style="list-style-type: none"> <li>• VMware Horizon<sup>®</sup></li> <li>• Microsoft<sup>®</sup> Azure</li> <li>• Microsoft<sup>®</sup> Azure Virtual Desktops</li> <li>• Microsoft<sup>®</sup> Windows Terminal Server</li> <li>• Citrix WorkSpace<sup>™</sup></li> <li>• Citrix Virtual Apps and Desktops<sup>™</sup> (formerly XenDesktop/XenApp)</li> <li>• Amazon WorkSpaces</li> </ul>
BROKER CLIENT <sup>2</sup>	<ul style="list-style-type: none"> <li>• VMware Horizon client 2306 or latest</li> <li>• Citrix Workspace app 2307 CR or latest</li> <li>• Microsoft RDP 10 client</li> <li>• Microsoft Azure Virtual Desktop client 1.2.x or latest</li> <li>• Amazon WorkSpaces Windows client 5.17.x</li> </ul>
LOCAL BROWSER	<ul style="list-style-type: none"> <li>• Microsoft Edge Browser</li> <li>• Microsoft Internet Explorer 11</li> </ul>
DELL PRODUCTIVITY APPLICATIONS <sup>4</sup>	<p><b>Dell Application Store</b> allows to selectively deploy Dell value-added applications to one device or a group of devices using Wyse Management Suite or Microsoft Endpoint Configuration Manager</p> <p><b>Overlay Optimizer</b> provides write protection to deliver better performance and session reliability</p> <p><b>Dell Application Control Center</b> provides enhanced control over system configurations, embedded applications and utility tools through an intuitive, easy to navigate interface.</p> <p><b>Easy Setup</b> helps to quickly and simply deploy configurations</p> <p><b>Application Launch Manager (ALM)</b> enables to start an application that is based on predefined events such as service startup, user login/logoff, or system shutdown in system account.</p> <p><b>xData Cleanup Manager</b> helps to optimizes client disk space</p>
UNIFIED COMMUNICATIONS OPTIMIZATION	<ul style="list-style-type: none"> <li>• Microsoft Teams VDI Optimization (for Citrix and VMware)</li> <li>• Zoom Cloud Meetings VDI Optimization 5.16.x or latest (for Citrix and VMware)</li> <li>• Cisco Webex App VDI Plugin 43.12.x or latest (package includes VDI Meetings and VDI plugin)</li> <li>• Cisco Jabber 14.3.x or latest</li> </ul>
SECURITY	<ul style="list-style-type: none"> <li>• TPM Hardware encryption<sup>®</sup> (factory configuration)</li> <li>• UEFI supported</li> <li>• BitLocker Drive Encryption</li> <li>• Unified Write Filter supported</li> <li>• VMware Carbon Black (optional)<sup>1</sup></li> </ul>
WINDOWS APPLICATIONS	<ul style="list-style-type: none"> <li>• Windows Media Player</li> <li>• Windows Multitouch and gestures support</li> <li>• Microsoft .NET</li> <li>• Keyboard Filter</li> <li>• Windows Defender Advanced Threat Protection</li> <li>• H.265 codec with HEVC</li> </ul>
MANAGEMENT OPTIONS	<p>Wyse Management Suite 4.3 (or above) Pro edition recommended for comprehensive management and hybrid cloud deployment - <a href="#">Free trial</a></p> <p>Wyse Management Suite 4.3 (or above) Standard edition available for basic on-premises management - <a href="#">Request 1-year free license</a></p> <p>Management through VMware Workspace ONE<sup>®</sup> (optional)<sup>2</sup></p> <p>Support for Microsoft Endpoint Configuration Manager 2303</p> <p>Dell Command   Monitor 10.6.x</p> <p>Remote shadowing and control with Tight VNC</p>
USER INTERFACE LANGUAGE SUPPORT	English, Brazilian Portuguese, Spanish, French Canada, German, Italian, French, Russian, Simplified Chinese, Traditional Chinese, Japanese, Korean, Danish, Denmark, Finnish, Swedish, Norwegian, Dutch
DOWNLOADS AND TECHNICAL DOCUMENTATION	Quarterly releases and technical documentation are available on <a href="https://Dell.com/Support">Dell.com/Support</a> for the supported Dell thin clients.

# Your thin client solution in 3 easy steps

Meet the evolving needs of the workforce and increase efficiency without compromising on security with Cloud Client Workspace software and Dell thin client solutions. Pair our thin client software options with industry-leading Latitude and OptiPlex systems for a personalized VDI endpoint solution delivering smarter user experiences and stronger security.

## 1 Select the Thin Client Software

### Dell ThinOS<sup>1</sup>

The most secure thin client OS\* is purpose-built for VDI to deliver a simplified end-user and IT experience.

### Dell Hybrid Client<sup>1</sup>

Modern thin client software with incredible flexibility allowing secure access to applications and data, wherever they live – whether that’s in the data center, the cloud or the local device.

### Windows 10 IoT Enterprise<sup>1</sup>

Power and familiarity of Windows® in a thin client optimized by Dell with robust security features and flexible management options.

## 2 Choose a Form Factor

Laptop, All-in-One and desktop form factor options give you the freedom to create a personalized virtual workspace. Work in confidence anywhere and enable a more productive and collaborative VDI experience with our new premium devices.



### OptiPlex 3000 Thin Client

The OptiPlex 3000 Thin Client delivers a quiet, durable computing experience and makes it easier to multi-task.



### OptiPlex All-in-One

Work in comfort and style with a sleek, new All-in-One design with collaboration and security features built in.



### OptiPlex Micro<sup>1</sup>

Ultra-compact desktop designed to free up workspaces. Supports up to 4 displays.



### Latitude 3440

Tackle tasks with this modern laptop equipped with upgraded features.



### Latitude 5450<sup>1</sup>

Achieve the perfect balance with this scalable laptop that boast impressive power.

## 3 Add Wyse Management Suite Pro

An enterprise-class solution that provides modern and secure management of all your Dell thin client solutions from anywhere. Securely manage a distributed workforce with a hybrid cloud solution designed to meet all deployment levels.

[Click here to learn more about Cloud Client Workspace.](#)

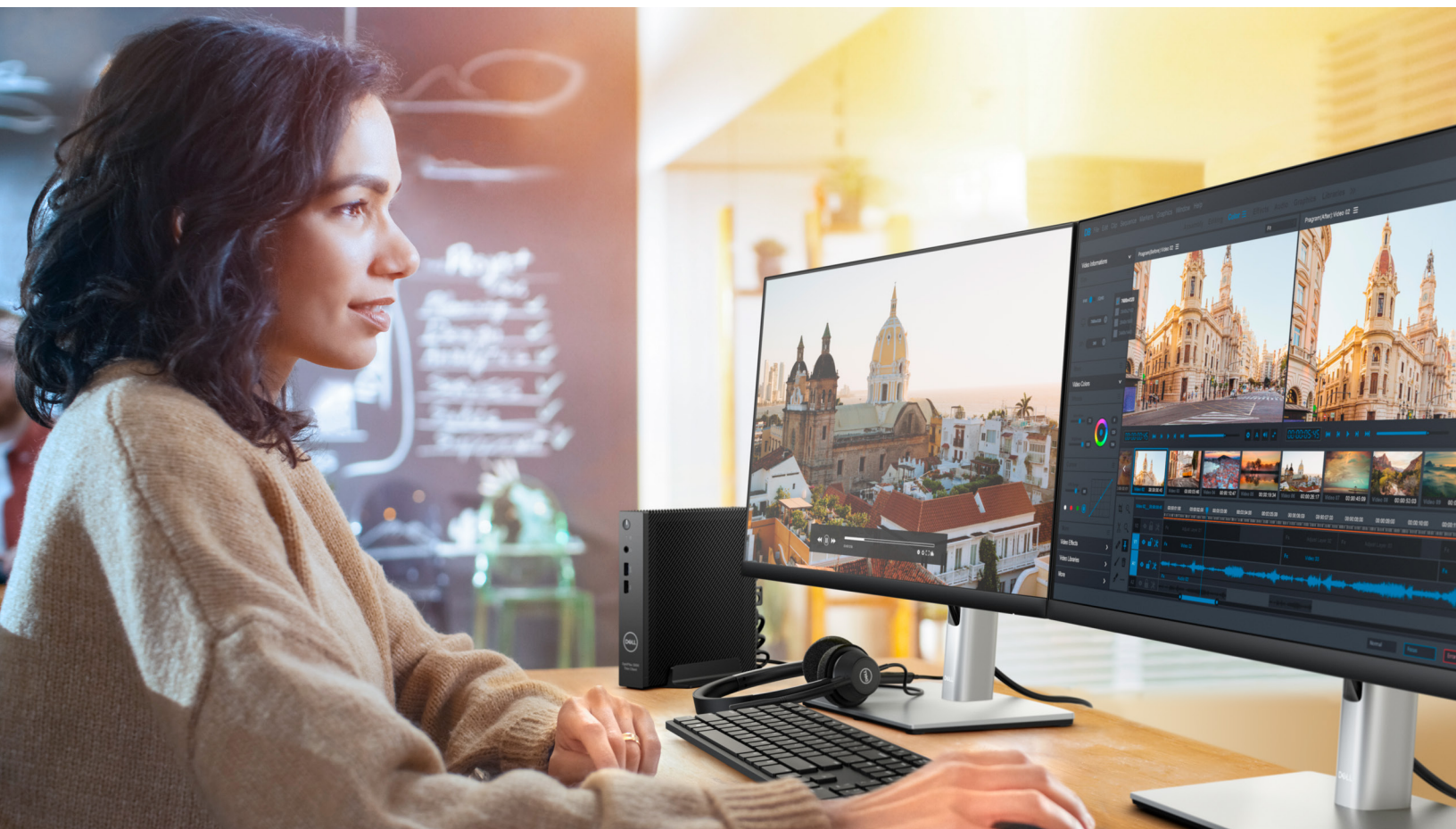
\* Based on Dell analysis of Dell ThinOS v. competitive products, January 2024. CLM-006983

<sup>1</sup> Offering may vary by country and by configuration and operating system. Some items may be available after product introduction. For complete details, refer to the Setup and Specifications published on [www.dell.com/support](http://www.dell.com/support).

Dell ThinOS is not available to configure with the OptiPlex Micro Form Factor and Latitude 3450. Dell Hybrid Client is not available to configure with the Latitude 3440. Dell Hybrid Client (v2.5 or above) is sold separately as a customer install option with the OptiPlex Micro Form Factor and Latitude 3450 (requires the device to be configured with 8 GB Memory, 128 GB or higher capacity SSD/HDD and Ubuntu Linux 22.04 with Dell Client Agent Enabler (DCA-Enabler)). Windows 10 IoT Enterprise is not available to configure with the Latitude 3450. Windows 10 IoT Enterprise with Latitude 5450 is coming soon.

<sup>2</sup> Product images are not to scale. Refer to specifications for accurate measurements





### Secure by design

Work confidently from anywhere with solutions designed to augment the security of your VDI and cloud environments.

### Unified approach to I.T.

Modern management with hybrid cloud deployment provides greater control and agility.

### Optimized user experience

Access digital and virtual workspaces with unprecedented simplicity and flexibility.

## Learn more at [Dell.com/CloudClientWorkspace](https://www.dell.com/CloudClientWorkspace)

1. Sold separately, available from respective vendors.
2. Based on Dell internal analysis using CPU Mark benchmark tests, comparing the OptiPlex 3000 Thin Client configured Windows 10 IoT Enterprise with the Wyse 5070 Thin Client similarly configured, March 2022. Actual results may vary.
3. Requires Wyse Management Suite Pro on public cloud. License activation required.
4. Wireless antenna and module available only at time of system purchase.
5. Offering may vary by country and by configuration and operating system. Some items may be available after product introduction. For complete details, refer to the Setup and Specifications published on [www.dell.com/support](https://www.dell.com/support). Dell ThinOS is not available to configure with the OptiPlex Micro Form Factor and Latitude 3450. Dell Hybrid Client is not available to configure with the Latitude 3440. Dell Hybrid Client (v2310 or above) is sold separately as a customer install option with the OptiPlex Micro Form Factor and Latitude 3450 (requires the device to be configured with 8 GB Memory, 128 GB or higher capacity SSD/HDD and Ubuntu Linux 22.04 with Dell Client Agent Enabler (DCA-Enabler)). For information about the supported platforms and configurations for Dell Hybrid Client deployment and conversion, see the Dell Hybrid Client Version Conversion Guide at [www.dell.com/support](https://www.dell.com/support). Windows 10 IoT Enterprise is not available to configure with the Latitude 3450. Windows 10 IoT Enterprise with Latitude 5450 is coming soon.
6. Visit [dell.com/support](https://www.dell.com/support) for a comprehensive list of all available downloads and latest release. For complete details, refer to the Windows 10 Enterprise for Dell Thin Clients Administrator's Guides published on [www.dell.com/support](https://www.dell.com/support).
7. Support and features depending on customer environment and by region, partner broker, VDI protocol and configurations.
8. TPM is available in selected regions and select models.